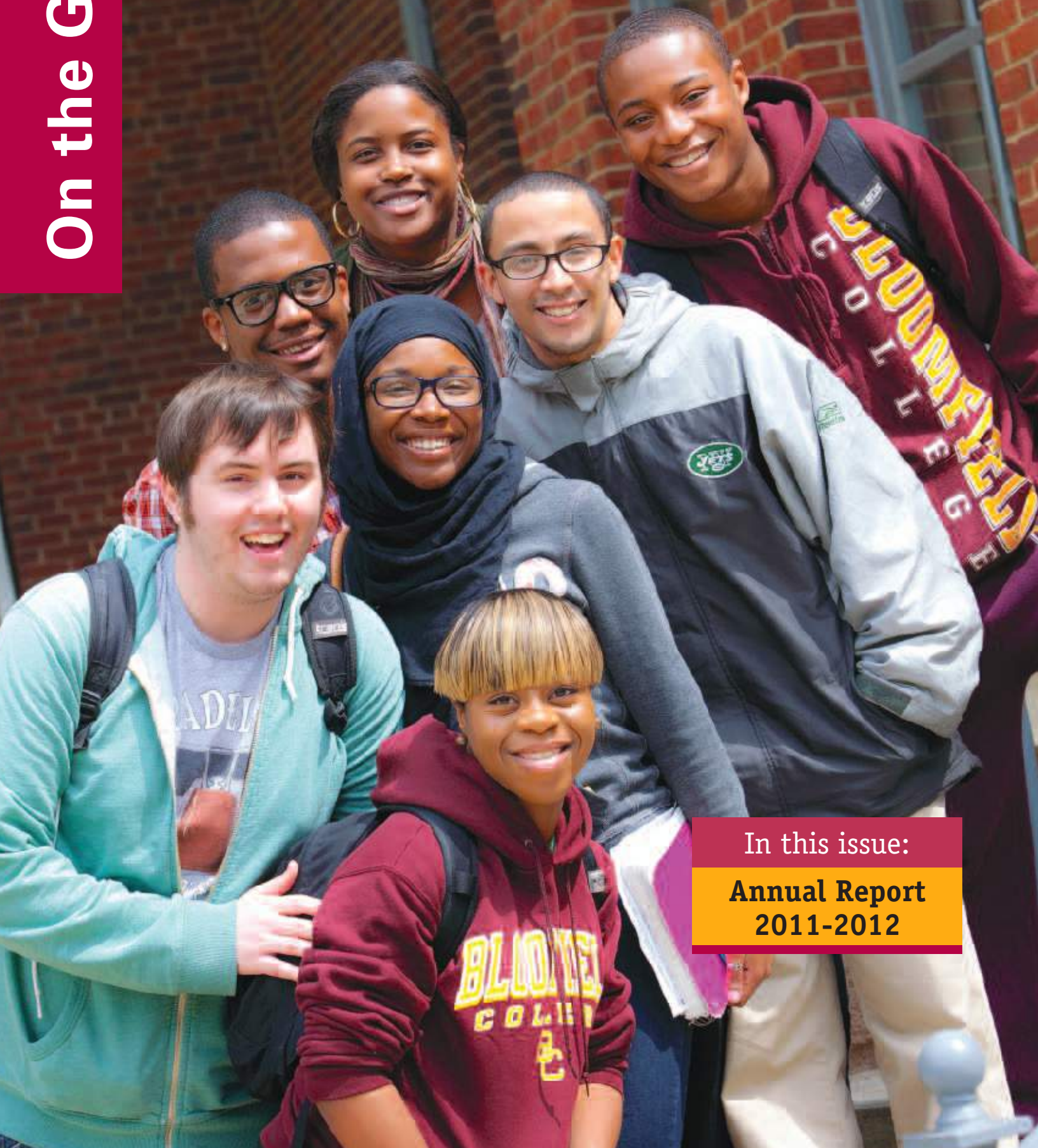


On the Green

# Bloomfield College

MAGAZINE FOR ALUMNI AND FRIENDS ■ SPRING 2013



In this issue:

**Annual Report  
2011-2012**

BLOOMFIELD COLLEGE  
ALUMNI ASSOCIATION  
**Spring GALA**  
2013

**CELEBRATIONS 2013**

April 20  
Spring Gala

May 22  
Baccalaureate and  
Nurses Pinning

May 23  
Commencement

July  
Bar A Alumni Reunion

Saturday, April 20, 2013 | The Bethwood, Totowa, NJ

**2013 Honorees**

**Lynne and Archie Palmer**  
Trustee Service Award

**Rev. Tony MacNaughton '64**  
Alumni Hall of Honor

**Christina Crespo '01**  
Athletic Hall of Fame

Tickets are \$80. Open bar, cocktail reception, tricky tray, seated dinner and program with live entertainment by The Soul Cruisers.

Net proceeds to benefit the BCAA Scholarship Fund and alumni programming.

For sponsorship opportunities, contact the Office of Institutional Advancement at 973-748-9000, ext 1293 or advancement@bloomfield.edu.

To purchase tickets, visit [alumni.bloomfield.edu](http://alumni.bloomfield.edu) and go to our events page.

**Thank You, Sponsors:**

\$10,000 Dinner  
Sponsor

\$5,000 Cocktail  
Reception Sponsor

\$5,000 Entertainment  
Sponsor

\$3,000 Registration  
Sponsor

\$3,000 Program  
Sponsor

**John Delucca '66**



**On the Green**

OFFICIAL PUBLICATION OF BLOOMFIELD COLLEGE • SPRING 2013  
973-748-9000 • [www.bloomfield.edu](http://www.bloomfield.edu) • [www.bccommunity.org](http://www.bccommunity.org)

Richard A. Levao, *President*  
Nicole Quinn, *Interim VP of Institutional Advancement and Director of Donor Relations and Events*  
Jill B. Alexander, *Editor, Director of Public Relations and Advancement Marketing*

Diane A. Carlin, *Director of Advancement Services*  
Joni Frascati, *Office Manager*  
Kathleen A. Guerino, *Director of Grants*  
Janis Oolie, *Director of Annual Giving and Alumni Relations*

**Bloomfield College Board of Trustees 2012-2013**

Martin McKerrow, *Chair*  
John J. Delucca '66, *Vice Chair*  
Stephen A. Glasser, *Vice Chair*  
Adrian A. Shelby, LLD, H'98,  
*Secretary*

Diana Drysdale  
Vernon M. Endo  
Patricia A. Etzold  
Emer D. Featherstone  
Dorothea B. Frank DFA H'11  
James R. Gillen  
Carolyn Roberson Glynn '69  
Dr. Maureen C. Grant  
Rosemary Iversen  
Nancy L. Lane  
Richard C. Larsen '66

Richard A. Pollack, LLD H'99  
Sanford B. Prater  
Glenn M. Reiter  
Hannah Richman  
Dr. Steven M. Rose  
Anne Moreau Thomas  
William H. Turner III  
Hank Uberoi  
Nancy H. Van Duyne  
Joel M. Weiner '66

**Emeriti**  
Bernard S. Berkowitz, Esq.  
James C. Kellogg  
L. Donald LaTorre  
P. Henry Mueller, LHD H'91  
Peter A. Olson  
Alice W. Price  
  
*In Memoriam*  
S. Jervis Brinton Jr., LLD H'12

Bloomfield College Nondiscrimination Policy: Bloomfield College admits students of any race, color, creed, age, gender, or national origin to all the rights, privileges, programs, and activities generally available at the College. It does not discriminate on the basis of race, color, creed, age, physical handicap, sex, or national origin in the administration of educational or admission policies, scholarship and loan programs, athletics, employment, or College-administered programs.

Bloomfield College is committed to the principle of non-discrimination, as set forth in Title IX of the Educational Amendments of 1972, Title VI of the Civil Rights Act of 1964, and Section 504 of the Rehabilitation Act of 1973.

On the Green is published two-times a year by the Bloomfield College Office of Institutional Advancement, 68 Oakland Avenue, Bloomfield, New Jersey, 07003

**Photography:** Jill Alexander, Roy Groething  
**Front cover:** Photo by Roy Groething  
**Design:** Dorit Tabak, [www.tabakdesign.com](http://www.tabakdesign.com)  
**Printing:** Clifton & Heller, Fairfield, NJ

**CONTENTS**

**2** Message from the President

**3** Alumni Profile

Jean Anderson Eloy '98 MD, FACS

**5** The Board Room

Carmen Amalia Corrales

**6** Spring 2013 Gala Honorees

■ Lynne and Archie M. Palmer, Jr.  
Trustee Service Award

■ Rev. Tony MacNaughton '64  
Alumni Hall of Honor

■ Christina Crespo '01  
Athletic Hall of Fame

**8** On the Quad

■ Another reason to attend BC –  
It survives hurricanes!

■ Make a wish

■ Celebrating the American Spirit  
during Hispanic Heritage Month

■ New gallery space named for  
CAT alumnus

■ Coaches are more than  
just athletic!

■ Four reasons to study the  
STEM fields

**12** Donor Recognition Dinner

**15** Annual Report

**24** Deacon's Fest

**26** Class Notes

**29** Westminster Arts Center



12



29



24



6

**Our Mission:**

To prepare students to attain academic, personal, and professional excellence in a multicultural and global society.

## MESSAGE FROM THE PRESIDENT

Dear Bloomfield College Community,

This past fall showed the true character of the Bloomfield College community. With hurricane Sandy devastating the New York metropolitan area affecting many of our students, faculty and staff in various ways, the college community immediately rallied to support the victims, both our own and the residents of New Jersey who lost so much.

Students set up collections of personal and household items, held bake sales and raffles to raise funds and became involved in cleanup efforts. Several students were offered help through the Student Emergency Loan Fund and some students were given emergency housing on campus after their own homes were damaged. While the campus never lost power, the students who remained here occupied their time developing plans for outreach, studying and socializing. All remained calm under the watchful eyes of our resident directors. I am very proud of this community for their altruism and understanding of the magnitude of this emergency.

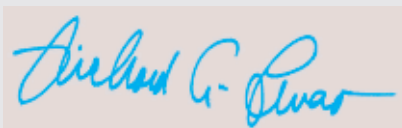
In this issue of *On the Green* is the Annual Report for 2011-2012. In spite of a sluggish economy, Bloomfield College is able to conduct business as usual, continuing with the Vision 21 plan and evaluating how we can best serve our students' academic needs. We are moving forward with the plans for the Franklin Street building. This much anticipated structure will continue our expansion locally and globally; offering more residence spaces for both our U.S. and international students.

One of the highlights of our year is bringing together our scholarship recipients and their donors at the annual recognition dinner. We heard from five bright and motivated students who are destined for great things in their futures. With scholarship help, they are able to focus on their chosen academic courses and are involved in athletics, research, student government, and the Honors Program. To bring together these hard-working students and their benefactors is a heart-warming and gratifying experience.

Other sections of the *On the Green* include introducing our newest board member, Ms. Carmen Corrales; an interview with Dr. Jean Anderson Eloy '98 who came to Bloomfield College speaking no English and left four years later to attend medical school, and the opening of our new art gallery space with the generous support from Mr. and Mrs. Marc Kaplan to honor their late son Scott Kaplan '02.

I hope to see you at the BCAA Spring Gala on April 20, 2013.

With warm regards,



Richard A. Levao, President



## ALUMNI PROFILE

### Jean Anderson Eloy '98 MD, FACS



The five Eloys

# family matters

Imagine your parents leaving for a foreign country so that they could set up a home to welcome you years later. Imagine stepping into your first classes in an American college without knowing any English. Imagine graduating with honors and continuing your studies to become a respected and honored member of the medical community.

Jean Anderson Eloy and his four siblings, all graduates of Bloomfield College, have accomplished that — with the exception of Gina, who did not go into the medical field but earned her honors as a teacher. Their journey to the United States was a long one with their parents arriving first and the five siblings staying in Haiti with their grandmother until they were settled and could reunite the family. Mr. Eloy senior, who taught math and science in Haiti, was taking odd jobs to support the family while their mother made a home to welcome the children.

One of the reasons for the immigration of the Eloy family was to ensure a top-notch education for the children — something that was not always accessible in their native country. Another was the growing political unrest that was in the wind which signaled a good time to relocate. While the town in which they lived was still safe, the children could hear the sounds of unrest in neighboring areas — sounds such as gunshots.

But they kept their eyes on the prize — which was education — and succeeded by relying on their close-knit sense of family. The children looked after one another and their grandmother was their strength and comfort as they waited for their parents to send for

them. Once in the U.S., they continued their schooling while having to learn English. Both Anderson and Daniel, his brother, entered Bloomfield College taking ESL classes along with their academic classes. According to Anderson, “studying the sciences was easy; math is the same in any language!” Both graduated with honors, fluent in English, and were accepted into UMDNJ medical school.

Anderson is a surgeon, his brother Daniel is an anesthesiologist, his sister Suzie is a medical technician, sister Naomi is a nurse pursuing her PhD, and Gina graduated with a degree in psychology and is a teacher.

While this profile focuses on Jean Anderson, the story is intertwined and needs to involve the entire family. Because as goes one, so goes them all.

Upon graduating Bloomfield College, Anderson continued his education at the University of Dentistry and Medicine of New Jersey then went to Mt. Sinai for his residency. From there he headed to the University of Miami to complete a fellowship in rhinology, sinus, and endoscopic skull-base surgery. Why this particular specialization? When studying anatomy, he enjoyed learning about the head and neck the most and did well in this anatomical area. He became a teaching assistant and had to make sure he knew his topic extremely well in order to teach it to others. Then he discovered that he had a passion for research and enjoys to this day looking at different techniques for surgery that are less and less invasive. As a fellow at the University of Miami, he developed a surgical technique that is still used and taught at UMDNJ.

As brilliant as Anderson is, he did not get through his education without “well-meaning” discrimination. There were people who did not believe he could achieve the rank of a head and neck surgeon, simply because the color of his skin. As he learned more and more about head and neck surgery, a mentor told him not to go into that field as there were no surgeons of color. Anderson characteristically noted, “He had my best interests at heart — he did not want me to hit a brick wall.” Also, characteristically, Anderson rose to the challenge and not only became a leading head and neck surgeon, but continues to research and publish new technical findings with a number of students with whom he works. Anderson bears no ill-will towards his detractor as he felt that the statement was meant to protect him, but served only to make him work harder to

pursue an area in which he became expert as well as one he enjoyed.

This very empathic doctor restores one’s faith in the medical profession. He went to Haiti after the devastating earthquake with Project Medishare, travelling with another BC alumna

Widney Pierre who is an OR nurse.

“My brother Daniel has been back to Haiti a number of times to lend his skills and I hope to get back there again — after my first child (due in November 2012) is born.”

For his efforts, he received the Physician of the Year award from the NJ Chapter of the Association

of Haitian Physicians Abroad. He also received the excellence in teaching award from UMDNJ in 2009. “I enjoy working with the students and having them participate in the research. They are dedicated to the field and together we have contributed to over 90 journals.” Anderson also travels the world to present his research results to medical conferences.

As a member of the medical staff at UMDNJ, Anderson is a member of the New Jersey Medical School Admission Committee, the New Jersey Medical School Faculty Council and involved with otolaryngology — head and neck surgery resident training. Among his many titles are vice chairman of otolaryngology, assistant professor of otolaryngology and neurological surgery, and director of rhinology and sinus surgery. What his written biographies do not share however, is this physician’s deep commitment to his patients as whole persons and not just cases and his devotion to his students. He speaks of seeking medical students who can balance a sense of humanity with medical skills and highly prizes empathy. “Although entrance exam scores are important, I do seek a sense of humanity in the students I interview,” he explains. “A physician’s needs to have a bond with each patient to aid in the overall healing.”

What does he like to do for fun? Dr. Jean Anderson Eloy’s eyes light up with this question. “Research!” he proclaims. The love of learning has never waned and he seeks to learn from his students as well as teach them. And an occasional game of golf. “It is the one sport a surgeon can safely enjoy,” he explains.

What advice would he give to students? “My family is an example of what can be done with hard work. Learn in every instance because all learning is useful. And go for your dream. You may have to work harder, but don’t let anyone talk you out of what you want in life.” ■

**While this profile focuses on Jean Anderson, the story is intertwined and needs to involve the entire family. Because as goes one, so goes them all.**

## THE BOARD ROOM

# Carmen Amalia Corrales

Bloomfield College welcomes Ms. Carmen Corrales to the College’s Board of Trustees.

Originally from Cuba, Ms. Corrales moved to New Jersey from Spain at a young age. She received her B.A. from University of Pennsylvania and her J.D. from Harvard University Law School. After clerking for a year, she joined the New York firm of Cleary Gottlieb in 1990.

Ms. Corrales became a partner in the firm in 1998 with her practice focusing on corporate and sovereign transactions, including securities offerings by sovereign and corporate issuers and sovereign debt restructuring. Ms. Corrales has extensive experience in international finance transactions, including representing public and private issuers and underwriters in

equity and debt offerings in international markets and in the legal structuring and documentation of derivative transactions and complex commercial bank lending transactions.

Her corporate practice in Latin America is distinguished as one of the best in the region by Chambers Global, Chambers USA, Chambers Latin America, The Best Lawyers in America and The Legal 500.

Ms. Corrales is a member of the Academy of Political Science’s Board of Directors and of the Committee for Cyrus R. Vance Center for International Justice.

She is a member of the Bars in New York and New Jersey. Her native language is Spanish and she is fluent in English and Portuguese.



“I am pleased to be on the board of a liberal arts college that pursues and nurtures the talents of students who might not otherwise be able to have this kind of opportunity” says Ms. Corrales. “The administrators and faculty members are creative and passionate professionals who allow their students to explore their potential.” ■

## THE BLOOMFIELD COLLEGE FUND – YOUR SUPPORT MATTERS



The mission of Bloomfield College is to prepare students to attain academic, personal and professional excellence in a multicultural and global society. In fulfilling this mission, the College remains committed to providing a culturally enriching campus environment, study abroad opportunities, and hands-on approach to student learning. By supporting the Bloomfield College Fund you will have a profound impact on our students and your future leaders of the world.

Thank you for your support.



Change the life of our students by making your gift using our secure website at:  
[alumni.bloomfield.edu/bloomfield-college-fund](http://alumni.bloomfield.edu/bloomfield-college-fund)



From left are Professor Jeanne Nutter, Archie M. Palmer Jr., Sandra Seju '13, and Lynne Palmer.

## Lynne and Archie M. Palmer, Jr.

### TRUSTEE SERVICE AWARD

The Trustee Service Award 2013 will be given to Lynne and Archie M. Palmer Jr. for their outstanding service of time, talent, and treasure to Bloomfield College.

Mr. Palmer had no affiliation with the college prior to becoming a trustee. A chance meeting with former college president Jack Noonan led both Archie and Lynne to become interested not only in the mission of the college, but in the students as well. They both were awed by the tenacity and motivation of Bloomfield College students and wanted to give as much as they could to the college to give the students the advantages found in wealthier populations.

When asked to become a trustee, there was no doubt that this would be a position in which Mr. Palmer could lend his talents for working with diverse populations. As a trustee he served on the student affairs and enrollment management committees. As

he learned more about the students, he discovered the financial needs of some were critical to their achieving a degree. He began to develop plans for several funds set up to help students who find themselves in financial crisis. In the intervening years, Lynne and Archie Palmer have set up several funds and scholarships specifically to honor members of their family who prized education.

Archie and Lynne work together to determine the beneficiaries of their gifts. Lynne was a school social worker and understood the potential of students if someone would be willing to invest in them.

As a trustee, Mr. Palmer set his sights on improving the lives of Bloomfield College students. His ideas and planning skills were quite instrumental in developing new program concepts involving co-curricular activities. He developed a co-curricular fund that would allow faculty members to expose their students to the larger community through workshops and trips in this culturally rich metropolitan area.

Mr. Palmer served on the Bloomfield College Board of Trustees from 2000 to 2008. ■

## Rev. Tony MacNaughton '64

### ALUMNI HALL OF HONOR

Tony MacNaughton graduated from Bloomfield College in 1964 with a degree in sociology and a minor in psychology. He is a member of the Tau Alpha Kappa fraternity.

Tony has demonstrated a commitment to his community, his career and his alma mater by sharing his time and talent. A long-time member of the Bloomfield College Alumni Association, he has been present for many of the events of the years encouraging alumni to participate in the life of the college. He serves as president of the Westminster Foundation Advisory Board of the college.

Other board memberships include the YMCA, the Visiting Nurses Association, and the Morristown Memorial Hospital Chaplaincy Board. He served as the chaplain to the Cedar Knolls fire and police departments for 41 years and spent time as a driver for the Cedar Knolls Volunteer First Aid Squad. He had perfect attendance at the Rotary Club where he was president for two terms and had been its secretary since the 1970s.

Within Hanover Township, of which Cedar Knolls is a part, he served on the cultural committee, the substance abuse awareness committee, the juvenile conference committee where he was the secretary for 41 years, the Whippany Park High School Principal Advisory Committee, the Allegro School Advisory Committee for Adult Care and the Hanover Township Ministerial Association. For his service to Hanover Township, he was recently awarded the Paul Harris Fellowship Award.

Tapping into his thespian side Tony has been a member of the Montclair Operetta Club since high school and served there as a board member for 30 years. He was also the lighting director for Mandy Productions and led them as their president for several terms.

Professionally, Tony served as the pastor at Hildale Presbyterian Church until his retirement in 2012. He was involved with the Presbytery of the Presbyterian Church of the U.S.A. as chair of the board on ministry, and moderator and delegate to the National General Assembly. He served on the Presbytery reconstructive committee for 2012.

The Whippany Rotary Club celebrated his retirement with a dinner in October 2012. ■

Tom Hart '64 and Rev. Tony MacNaughton at the 2012 Spring Gala.



## Christina Crespo '01

### ATHLETIC HALL OF FAME

One of the top perimeter players in program history, Christina Crespo '01 starred for the Bloomfield College women's basketball team from 1996 to 2000, amassing 1,520 points over the course of her decorated four-year career. Playing both point guard and shooting guard for the Lady Deacons, Crespo was a two-time Team Captain for the club, earning All-Conference, All-District and All-America selections during her tenure at Bloomfield.

Currently residing in Scallen, Texas, Crespo is a National Customer Service Manager for appliance companies JBC and Kenwood, and has a four-month-old son, Carter. ■

## Another reason to attend BC — It survives hurricanes!



When Hurricane Sandy barreled up the East coast last October, Bloomfield College went into high gear to make sure that the students who needed to remain on campus were safe and well fed. The college has an emergency plan in place with an emergency response team to put the plan in motion.

The smaller residence halls were evacuated and the residents moved into the larger brick halls of Schweitzer, Clee and 225 Liberty. Those residing at the University Centre were allowed to stay, although a number of students from the campus overall chose to go home. Bagged meals were prepared for all remaining students and distributed by the resident advisors.

While power lines went down all around the campus, Bloomfield College never lost power. All the students were able to stay warm, have hot meals, and use their laptops to get ahead with their school work. The campus opened the following Monday, November 5, 2012.

The students then went into action, planning relief efforts to help those in New Jersey who were victimized by Sandy. Immediately, collection bins sprung up to gather toiletries, blankets, water, and warm clothing which will be distributed through collaborating agencies. Bake sales to raise money for relief efforts were held daily and students began to sign up to join teams of people to help clean out devastated residences nearby. ■

## Make a



Washington Intern Student Housing (WISH) is a program that houses student interns while they are working in the White House, Capitol Hill, government agencies, news outlets, law offices or in non-profits. The program sets up student interns in apartments or condos with or without roommates, close to the center of Washington DC and the public transportation system. The program is designed specifically for students who have financial difficulties and couldn't pursue this on their own.

Bloomfield College has signed a partnership with WISH stating that the college would support the student and ensure a full credit load. The college will be paying into the program for both the internship and housing. Students will be working for national and international decision makers and top flight think tanks as well as policy making organizations. The students will meet top level officials in the public and private sectors from every type of agency who either does business in DC or is located in DC. In addition to the experience, students will be required to attend a weekly

seminar that is offered by the WISH staff. In the seminar, students will meet top officials in their fields who will discuss matters of public interest and/or current issues that have an impact on the national agenda and students will be expected to fully participate and be prepared to engage in such conversations.

In this program are seniors Armen Sahakyan and Thelesha Gray. Armen is studying international political economy and Thelesha is a nursing student. ■



Stephanie Cruz, a member of Chi Upsilon Sigma National Latin Sorority Inc., Beta Lambda Colony Executive Board presents a certificate of appreciation to keynote speaker Carlos Valentin for participating in the Hispanic Heritage Month opening ceremony. Joining them is President Richard Levao, who noted in his welcome that the hallmark of Bloomfield College is the celebration of diversity.

## Celebrating the American Spirit during Hispanic Heritage Month

National Hispanic Heritage Month celebrates the cultural contributions of the Latino community to the larger fabric of Americana. This celebration began as a week by presidential decree in 1968 under the Johnson Administration and became a month of celebration in 1988.

The month of celebration was open to all of the campus community to experience the facets of the culture. The opening ceremony featured brief history of Hispanic Heritage Month by sophomore Vanessa Garcia, a welcome by President Levao, a musical performance of *En mi Viejo San Juan* by Health Services Director Bob Martinez, and a step dance performance by the Lambda Sigma Upsilon step team. The keynote speaker was Carlos Valentin, the executive director of Aspira Inc. of New Jersey.

Mr. Valentin spoke candidly to the assembled audience about his difficult childhood, growing up in a home with a drug-addicted mother and no father. He took his younger brother and sister under his wing at a very young age and guided their growing up. He remained involved in his school and his community and began to take on leadership roles. He encourages young people to finish

school and give back to their communities. In his words, "I am not special; I just worked hard and persevered." He has a long history of working in community development programs, many of which focus on education and children. As the executive director of Aspira, he oversees the programs that he participated in as a young person.

The celebration closed with Nereida Montijo, coordinator of service learning and diversity initiatives, noting that Hispanic heritage encompasses many different cultures and colors. "We need to know and understand our history, our roots, from Indian to African, from South America to Europe. We are of many backgrounds and are proud to be Hispanic!"

During the month, several activities invited members of the college community to participate in learning more about Hispanic cultures. Discussions about immigration, performances of Latino music, dance, and the spoken word and the closing ceremony which featured a traditional Spanish dinner gave all an opportunity to learn and understand those cultures which have become a part of American life. ■



The Scott H. Kaplan '02 Art Gallery's inaugural show's artist Laylah Amarullah Barrayn on left with Mrs. Ellen Kaplan, Scott's mother.

## New gallery space named for CAT alumnus

Scott H. Kaplan '02 was a young man who impacted Bloomfield College by making sure that he could get to his CAT classes in his wheelchair. Through his persistence and determination, the college became entirely accessible to people with disabilities. Having a campus with older buildings required outfitting the structures with ramps, lifts, and motorized chairs on the stairways. While the college had been making accommodations for students with disabilities, Scott made sure that he and others could be full participants in all classes. His achievement endeared him to the entire community and he graduated with a degree in graphic arts, a field that he loved and in which he was quite proficient.

Scott was one of those people that will become legend in the college's history. He

had muscular dystrophy and was wheelchair bound most of his life. He was creative, smart, and spirited. A decade after his passing, the new art gallery, located on the second floor of the library — conveniently near the elevator — has been named in his honor. The Scott H. Kaplan '02 Art Gallery opened with a show by Brooklyn artist Laylah Amarullah Barrayn with her exhibition titled, *Her Word as Witness*. Ellen Kaplan, Scott's mother, attended the opening and was warmly greeted by the artist, the show's curator, Halima Taha, and Scott's former professors, who met her with tears and tender hugs.

Marc and Ellen Kaplan's gift to the college to honor their son will not only secure his place in college history, but also provides learning space for students of all disciplines.

The gallery has multi-media capability and can be used for film studies, readings, student exhibitions as well as professional shows. It is a valuable space on the college campus that has multiple uses.

The Kaplans have also established an endowed scholarship in Scott's name that assists CAT students. This past year, three students received the scholarship, enabling them to continue their studies without the pressure of finances as an obstacle to their success.

Professor Emerita Lisa Rabinowitz said, "I can think of no better way to remember him. We all benefitted from knowing him and having him in our classes." ■

## Coaches are more than just athletic!

Going away to college is one of the biggest steps a young person can take — and often one of the most stressful. Learning to live with complete strangers in an unfamiliar environment, becoming instantly responsible for one's own actions, academics, and values is an enormous task. It is exciting to be able to explore new worlds, discover new ways of life, and learn new ways of thinking, but sometimes this can be a bit overwhelming.

The Office of Residential Education and Housing, under the direction of Rochelle Gabriel, has instituted a first-year personal coaching program for the two large residence halls on campus. The two resident directors were trained in personal coaching strategies over the summer and are responsible for maintaining regular contact with first year resident students throughout the year. The focal point of the program is to encourage and assist students in making healthier life choices and to seek greater levels of responsibility for life progression and success.

The ongoing partnership between the resident director/coach and the student will include discussing and devising realistic plans for accomplishing academic, personal, professional and social goals. The process is designed so that the student is supported and encouraged throughout the year. The agenda is student driven and the coaches are a positive first point of contact to help the student make decisions. It also helps familiarize students with on-campus services and resources and encourages students to fully participate in the activities of the college.

"Our intimate living and learning community is an ideal setting to prepare students to reach their life goals," says Gabriel in an open letter to new students. "The personal coaching program was developed and implemented to encourage and promote an effective transition to college life." ■



From the left are Adriana Martin '08, MD PHD candidate; Amy Pitler '12, PHD candidate; Abeer Abu-Judeh '97, attorney; and Marta Babyak '12, laboratory professional.

## Four reasons to study the STEM fields

Four alumni who studied the sciences returned to the campus to talk with LSAMP scholars about their lives after BC.

**Amy Pitler '12** is a PhD candidate at the University of Medicine and Dentistry of New Jersey (UMDNJ). She talked about how well prepared she was for graduate school in the sciences after spending many hours working in the science labs. "For me to stay in the program, I must maintain a 3.0 GPA," she says. "Bloomfield gave me a great background to not only get into this program, but to stay in it."

**Marta Babyak '12** went into the field upon her graduation, working for Princeton HealthCare System and a private lab. "I felt very ready to move into a career in the labs," she says. "The work I did here gave me the skills I needed."

**Adriana Martin '08** is a medical student and PhD candidate at the Robert Wood Johnson Medical School. She urged the students to be the best they could be and get all they could from the lab work.

**Abeer Abu-Judeh '97** went to law school after BC. "I learned study skills and good learning habits as a science major that helped me in law school," she says. "Learn your strengths and weaknesses, then turn your weaknesses into your strengths. Whatever you do, be the best at it."

All four alumni echoed the same theme — get everything you can from your studies, enjoy the close relationships with your professors, and be the best you can be. The LSAMP students were inspired to see that their hard work pays off.

The Louis Stokes Alliance for Minority Participation (LSAMP) is an alliance of nine New Jersey colleges and universities that are promoting STEM (science, technology, engineering, mathematics) among minority and underrepresented populations in those fields. The program involves career exploration, tutoring, peer mentoring, and field and conference trips. The program has been at a maximum population since its inception and will be growing again in the next academic year. ■

*(On the Quad continues on page 14)*

# Donor Recognition Dinner

The Bloomfield College Recognition Dinner is an annual event that brings together donors and their scholarship recipients. Held at Mayfair Farms in West Orange, the dinner includes speeches by several of the recipients about how scholarships have made a very positive impact on their quest for higher education.



1



5



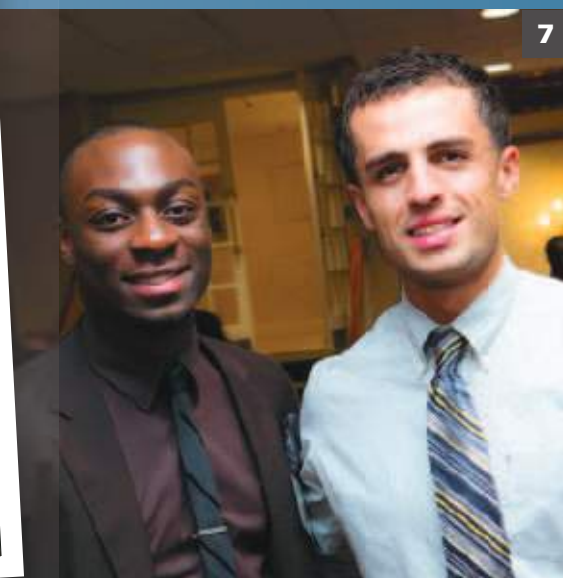
2



3



6



7



4



8



9

**1.** Bloomfield College President Richard Levao and Tosheia N. Ballard '95 Esq. Ms. Ballard, the donor of the Elizabeth J. Ballard Scholarship Fund, spoke about the need to give back and introduced the student speakers.

**2.** From left are Michael Reynolds of Wells Fargo, Jona Isufi '13, Trustee Hector Banegas, Sharif Thomas '15, and Tom Sullivan of Garitty, Graham, Murphy, Garofalo & Flinn P.C.

**3.** Thelesha Gray '13 talks about her research opportunities that were made possible by receiving scholarships.

**4.** From left are Diane Wilfrid, college President Richard Levao, Dr. Thomas Wilfrid, executive director of the Charlotte W. Newcombe Foundation; and Newcombe Scholars Jeana Largin '13, Sally Ann Goncalves '14, and Petrina Thomas '14.

**5.** From left are Glenys Merejo, trustee, Hispanic Business Council Scholarship Foundation; Dr. Tammy Castro, chair of the division of natural sciences and mathematics; Trustee Dr. Maureen Grant, Trustee Rosemary Iversen, and Amy Pitler '12.

**6.** Nancy Dotoli '84 and Janis Oolie, director of annual giving and alumni relations.

**7.** Scholarship recipients Seun Jimol '13 and Elson Smajlaj '13.

**8.** Scholarship recipients Chinadu Anyiam '13, Thelesha Gray '13, and Sabrina Pinthiere '13.

**9.** Sharif Thomas '15 tells the audience about his journey through Bloomfield College and the importance of scholarships to his academic career.





Jose Trucio and Carlos Gomez, global studies and honors students

## Honors students talk about their study abroad experiences

Bloomfield College honors students Carlos Gomez and Jose Trucios regaled the Honors Program students with stories of their semester abroad experiences. Gomez, an international finance major, spent the fall 2012 semester in France while Trucios, a sociology/criminal justice major, enjoyed Spain.

Gomez studied in Annecy, France, located on the eastern border by Switzerland. He participated in an international program to fully immerse himself in the French language at the Institut Francais des Alpes. During his time there, Gomez traveled to neighboring countries with his classmates from South America, Sweden, Belgium, and Syria. He is interested in business practices in Europe and would like to bring these

experiences to a corporate career in America. Now tri-lingual, Gomez anticipates continuing his education at the graduate level and as he says, "I want to break stereotypes of Hispanics in corporate America." Gomez received the Rosemary and Alfred Iversen Study Abroad Scholarship which helped to make this semester possible.

Trucios spent his semester at the University of Seville. A native Spanish speaker, he integrated easily into his classes. He took five classes in sociology and culture including religious cultures, international relations, and economics and culture. His goal was to fully immerse himself in a culture different than his own and understand the similarities and differences. He visited

both Morocco and Italy during the semester and observed key differences in the way people communicated, dressed, and acted both in public and private. "Family values, especially communication, are extremely important to the Spanish," he said. "During their siesta, families would spend the time talking rather than go off and do things on their own." His travels were made possible by the Maureen Grant Study Abroad Scholarship and the College Consortium for International Studies. Emy Kamihara, director of the center for global studies and English for academic purposes says that the College Consortium for International Studies is highly competitive and only takes two to three students per semester nationally. ■



### MESSAGE FROM THE CHAIRMAN

Bloomfield College remains true to its roots – a liberal arts college with a historic pattern of educating first-generation college students. We believe that a college-educated person is a positive vehicle for critical societal change and we are proud of the role we play in creating that change.

To meet our goals we undertake a continual assessment of our academics, our staff, our physical infrastructure and our spirit to make sure that we can best meet the needs of our students. In a society that is continually evolving and in an environment of increasing competition for qualified students we have to gradually adapt our offerings if we are to continue to make a difference. I report with pleasure that we are attracting better-prepared students and that larger numbers of our graduates are seeking advanced degrees. Our investment in change has helped us better meet students requirements and ongoing investment will help us in the future.

A prime example of this investment is our plan to break ground late this spring on a new student housing project. This approximately 250-bed facility will represent the first – in many years – geographic expansion of the College's footprint. More importantly, we believe that it promises to be transformative for Bloomfield College as it will provide a further reduction in the need of our students to commute to the College. For our students this should lead to a distinct change in the college experience as they are able to live on the campus better benefiting from the community spirit that is such an important part of the educational experience. With this project's completion – currently planned for the academic year 2014-15 – the College plans to modestly expand its geographic recruitment. Combined, this should further increase graduation rates.

If you take a few minutes to read this annual report, you will get some sense of the range of the changes that are taking place. These would not be possible without your support. We are fortunate to be beneficiaries of the increasing generosity of individual, foundation and corporate donors as well as federal and state funding. Additionally, the staff, the faculty and the board of the College work tirelessly to advance this institution.

I thank all of you for your commitment.

Martin McKerrow  
Chair, Bloomfield College Board of Trustees



### MESSAGE FROM THE PRESIDENT

We are living in uncertain economic times during which higher education has seen unprecedented cuts to financial aid to students and funding cuts from the federal and state levels to both public and independent institutions. But we need to support higher education in our society, if for no other reason than an educated citizenry is required for a strong democracy.

We are building the future through higher education to nurture people of all ages to move into society as leaders of tomorrow. Through this, we are changing peoples' lives by offering lifelong learning skills, global education and intellectual discourse.

We are grateful to all who continue to advance the mission of Bloomfield College. Our donors make it all work. By supporting Bloomfield College, our donors provide advanced technology in our classrooms and labs, enable out of classroom learning experiences with mentoring professors, and give students the opportunity to pursue internships that enhance their resumes which will make them better employees in the future.

We thank all of our generous donors who make our day-to-day operations possible. With your support, we continue to grow and thrive, giving our students the best education available and creating leaders for tomorrow. In this annual report, you will find our successes for the academic year 2010-2011. We are pleased with what we have accomplished and look forward to accomplishing much more in the future.

Richard A. Levao  
President

## What difference does it make?

Bloomfield College continues to practice creative thinking in terms of strategic and tactical planning as the nation begins to turn around an economic slump that impacted all aspects of higher education. Through generous gifts, both restricted and unrestricted, as well as federal, state, and private grants, and careful and thoughtful planning by the Board of Trustees, administration and faculty, academic and extra- and co-curricular planning, facilities upgrades, and student assistance continued to push our students towards their dreams and successes.

From the inside of a higher education institution, creating more with less has always been the norm. However, due to Bloomfield College's unique population of first-generation students, international students, non-traditional students, as well as the traditional student who chose Bloomfield College for its excellent academics, programming to meet the academic, social, and physical needs of these varying groups is what Bloomfield College does best.

This Annual Report, which covers the academic and fiscal year 2011-2012, illustrates the creative diligence by all facets of the community. To make it a true community, all must work together to serve the entire learning population.

## College meets standards of accreditation

Bloomfield College spent the last two years in a self-study and assessment mode to answer the 14 accreditation standards put forth by the Middle States Commission on Higher Education about the education of the students.

In the preliminary report by the Commission, the college met or exceeded all 14 standards. In the course of self-study, the college determined areas that will be improved upon as strategic planning is developed. One area that is evolving rapidly is that of assessment. The concept is now being refined and emphasized in new and potentially useful ways, including the overall goal that colleges and universities are able to show what students are learning during the college experience. Bloomfield College was found to have implemented a number of worthy enhancements in assessment, and is using the results of the study to make further changes to improve the total range of programs and services of the college. The accreditation is good for 10 years.

To make a gift to the college, please contact the Office of Institutional Advancement at 973-748-9000 X 1293, [advancement@bloomfield.edu](mailto:advancement@bloomfield.edu) or online at <http://alumni.bloomfield.edu/make-a-gift>

## Support from our partners

Bloomfield College enjoys the support from corporate and foundation partnerships, locally, nationally, and globally.

**Roche Foundation:** The Roche Foundation has been a strong supporter of the college for two decades, contributing to endowed scholarships and the Bloomfield College Fund, among other gifts. The Roche Foundation awarded Bloomfield College the funds to create an exploratory program into the STEM subjects. This initiative encourages students to explore the sciences as a career choice. These students participate in the Louis Stokes Alliance for Minority Participation program (LSAMP) receiving tutoring, support, and extra-curricular activities that define the scope of possible science careers. The number of students registered in the program during 2011-2012 was 39. The number of pre-nursing students who participated in at least one event during 2011-2012 was 130. There are two layers of participation.

The first layer is an outreach to the pre-nursing students, which is our main target group, followed by the undecided and other students interested in STEM. The program reaches out to them mainly during the ESP program when they come in for the pre-nursing review.

The second layer of participation is for individuals who register officially to participate in future events because they want to know more about the opportunities in the STEM fields.

### Predominately Black Institutions

**Grant (PBI):** Proficiency in information literacy is critical knowledge in the age of technology. The PBI Formula I grant

is to develop an information literacy network to teach financial, technical, multicultural, and information literacy. The funding also provides for a new motion capture studio and educational renovations and additions to the library, including a new learning commons designed for large class discussion, small group discussion, one-on-one tutoring and multimedia. The PBI Competitive grant is a five-year funding program focusing on educating the college and the surrounding community about healthy lifestyle choices to combat the increasing incidence of obesity and related diseases. It will also contribute to creating a state-of-the-art nursing-education lab.

### Walmart Foundation and the Institute for Higher Education

**Policy:** The college was funded to build on its success in enrolling, retaining, and graduating first-generation students. Five administrators attended the Walmart Summer Institute where they unveiled the math pilot program. This program is

now being held up as a national model by the Walmart Institute. The program is a series of accelerated courses to prepare students for college math. It is credit-bearing to allow students to receive financial aid and jump starts them successfully into the next series of required math.

**National Science Foundation (NSF):** Professor Keith Guzik (Associate Professor, Social and Behavioral Sciences) was awarded a grant to continue his work on public reaction to the vehicle registry in Mexico.

**The Ronald E. McNair Scholars Program (McNair):** The McNair program is part of federal TRIO funding and is granted by the U.S. Department of Education. Students accepted into this program aspire to continuing their education to the doctoral level in their chosen fields. They are expected to participate in research, skill building seminars, and graduate exam preparation and are supported through college visitation and the application process. The program allows for 25 students. Since its inception, the program has been at capacity. McNair scholars have done research at MIT, Montclair State University, Rutgers University, Tuskegee University, University of California-Santa Barbara, University Nevada-Reno, and Bloomfield College. Four McNair Scholars graduated in 2012 and all were accepted into graduate schools. Bloomfield College is one of only 150 schools nationwide to have this program.

### Louis Stokes Alliance for Minority

**Participation (LSAMP):** LSAMP is an alliance of nine schools in New Jersey, funded by the New Jersey Commission on Higher Education, promoting the STEM (science, technology, engineering, mathematics) subjects to minorities and underrepresented populations. The program offers career exploration, peer tutoring, mentoring, and support for students interested in the STEM subjects. As of the close of the 2011-2012 academic year, LSAMP scholars numbered 60.

## Record number of BC students conducting summer research

Bloomfield College has more students working on research, not only with Bloomfield College faculty, but also in institutions across the country. Topics in the areas of psychology, religion, history, sociology, biology, journalism, English, and mathematics were being studied this past summer by Bloomfield College students. The venues range from the Massachusetts Institute of Technology,

to University of California, University of Nevada, Tuskegee University, Rutgers, Montclair State, and Bloomfield College. With a generous gift from Donald Ross '52, students received a stipend that allowed them to focus on the research.

## Advancing learning environments

Bloomfield College saw several capital projects either begin or completed during 2011-2012. In concert with curriculum changes to increase information literacy and proficiency among the students, to renovate buildings for more efficient use of space, and to continually upgrade technology to stay on the cutting edge of higher education, several buildings underwent modifications.

## Renovated halls get a grand opening

With a grant from PBI, Jarvie Hall was transformed into the Division of Education with offices, a practice teaching room, a computer room and a library with information specific to the field. Along with Richards and Voorhees Halls, Jarvie Hall was officially opened with a ribbon cutting that brought state, county and local officials to campus to formerly recognize not only the advances of the college in capital improvements, but also as a collaboration with Bloomfield Township in revitalizing the historic district and attracting more businesses to the area.

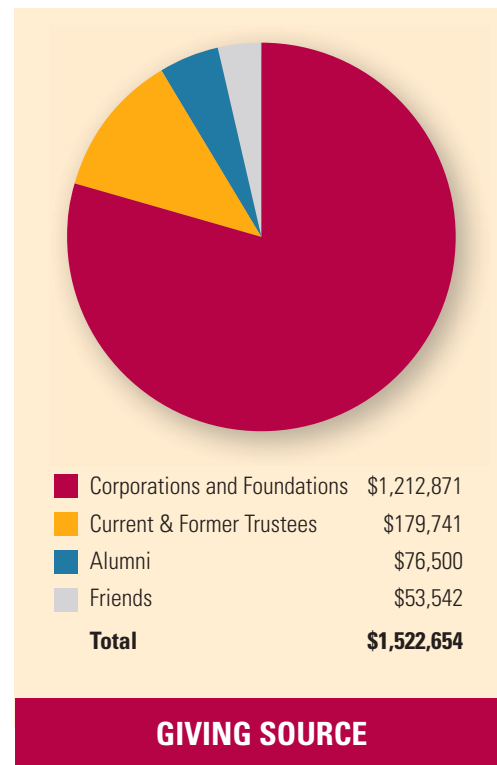
## Library

The renovations to the Library began with a two-year plan in place. During the 2011-2012 year, the motion capture studio and the learning hub were completed. The motion capture studio, the only one of

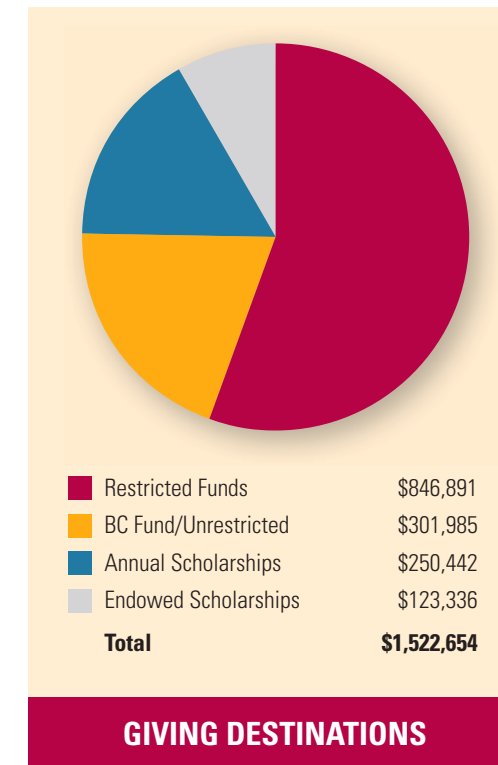
its kind in New Jersey, supports the CAT program giving students an added skill for their professional resumes. The applications for motion capture are numerous with use in athletics, medicine, and rehabilitation as well as in the film industry. The learning hub is a space designed for several methods of instruction and learning to happen simultaneously. It has areas for group work, individual work, classroom learning, and one-on-one instruction.

## Knox Hall

The renovations to Knox Hall yielded more than planned. Once the drop ceiling was removed, beautiful arched ceilings were revealed and carefully refinished. The building now houses all financial matters under one roof, making it easier for students to receive financial aid counseling and visit the bursar. It is also ADA compliant and barrier free.



### GIVING SOURCE



### GIVING DESTINATIONS

## Franklin Street Residence Hall

The Board of Trustees approved the plans for the new residence hall located at the corner of Franklin and Broad Streets. The proposed four-story building will replace the two-story structure currently on the site. The upper floors will be residence rooms and the ground floor is proposed for retail space. This is the first major capital project in many years to be built from the ground up, increasing the campus footprint closer into the business district of Bloomfield Township. Creating a residence hall will bring the students currently housed at the University Centre in Newark back to campus as well as open up housing for international students.

## Academic Partnership

In 2011-12, Bloomfield College signed a new articulation agreement with University of Medicine and Dentistry of New Jersey (UMDNJ) School of health related professions to award joint degrees in medical imaging sciences. Both schools continue the articulation agreements for the joint degree program in clinical laboratory sciences and allied health technologies.

## Institute for Training and Professional Studies

ITPS continues to expand its global reach by bringing both students and professionals from many parts of the world to the College campus to study English, American health care, educational practices, and hospitality. The TICKET (Total Immersion Course for Korean English Teachers) was joined by the MAST (Math and Science Teachers) program to host Korean teachers in those disciplines who desired to perfect their English language skills. As with the TICKET teachers, the MAST teachers were placed in area schools to practice their language skills with the American curriculum and students. This program has been a resounding success, prompting Nutley and Fort Lee school districts to reach out to the Korean government to partner for academic resources.

## Supporting lifelong learning

The Palmer Faculty Co-Curricular Innovation Grant Fund allowed faculty members to take their students to events that would expand upon their learning in the classroom. In the academic year 2011-2012, 488 students attended 22 events with 25 faculty members. The event venues were at the college, Manhattan, Blairstown, Jersey City, and Morristown. Among the activities were lectures, exhibits, performances, conferences and museums.

“ I appreciate the opportunity to represent Bloomfield College’s adult population and am very proud of the education I have received thus far. **I cannot say THANK YOU enough for the help of this scholarship.** ”

— Ka-Nisha Ferguson, Sociology  
Elizabeth J. Ballard Annual Scholarship Fund

environment. Each course will require field trips, taking advantage of the cultural and natural resources in the New York-New Jersey area. It is designed to instill lifelong learning skills and create a greater sense of community among first-year students.

Service learning allows students to become involved in the greater community and use their skills for the greater good. In the history of the College, the 2011 year represented record high accomplishments of student community service involvement. Approximately 800 students engaged in 11,000 hours of service and participated in 75 different community service/outreach activities with more than 50 external organizations.

Student community service activities included participation in food pantries; clothing drives; shelters for the homeless; reading and mentoring programs; walks for special causes; sustainability projects; care for senior citizens and other service initiatives.

To enhance its commitment to student service learning, a new position, coordinator of service leadership and diversity initiatives, was created with a budget to financially ease students’ expenses to engage in community service activities. Service learning is also a function in the Students Engaging in Real Volunteer Experiences (SERVE) Program, which is a new initiative to coordinate, track and assess service efforts of various curricular and co-curricular programs, student organizations and athletic teams.

“ I hope to be a nurse one day working at a hospital. I would just like to thank you from the bottom of my heart for giving me such an opportunity. **Without you, I wouldn’t be able to achieve my dreams.** ”

— Kimberly Luna, Nursing  
Rosemary and Alfred Iversen Freshman Scholarship

Academic affairs unveiled the new Geographies of Experience or GEO programming that would begin in the academic year 2012-2013. Fully titled Geographies of Experience: Culture, Art, Science, Self is a new, year-long, two-semester, two-course interdisciplinary general education requirement for all incoming first-year students. The two courses provide a common immersion experience in culture, art, and ecology that will broaden students’ knowledge in history, religion, art, culture and the natural

environment. Each course will require field trips, taking advantage of the cultural and natural resources in the New York-New Jersey area. It is designed to instill lifelong learning skills and create a greater sense of community among first-year students.

Service learning allows students to become involved in the greater community and use their skills for the greater good. In the history of the College, the 2011 year represented record high accomplishments of student community service involvement. Approximately 800 students engaged in 11,000 hours of service and participated in 75 different community service/outreach activities with more than 50 external organizations.

Student community service activities included participation in food pantries; clothing drives; shelters for the homeless; reading and mentoring programs; walks for special causes; sustainability projects; care for senior citizens and other service initiatives.

To enhance its commitment to student service learning, a new position, coordinator of service leadership and diversity initiatives, was created with a budget to financially ease students’ expenses to engage in community service activities. Service learning is also a function in the Students Engaging in Real Volunteer Experiences (SERVE) Program, which is a new initiative to coordinate, track and assess service efforts of various curricular and co-curricular programs, student organizations and athletic teams.

## Emergency no-interest loans to students

The Student Emergency Loan Program was created in 2005 from a generous gift by former Board of Trustee member, Archie M. Palmer Jr. and his wife Lynne. An additional fund-raising campaign was conducted in spring 2012, to increase the funds available. The program exists to provide short-term, no-interest loans to current Bloomfield College students who require emergency funds for medical, housing, food, books/school sup-

plies, and transportation needs. Students are allowed to borrow no more than \$350 per loan and are expected to repay the loan within 60 days. During the past academic year, loans were issued to 84 students for a total of \$19,390 for an average of \$200 per student. The usage of loans varied from personal to educational needs. This service helps students to focus on their academics rather than worry about short term financial issues.

## Athletic Success

The emphasis in the athletic program is on the whole student. Student-athletes are expected to not only fully participate in the sport of their choice, but also maintain a high GPA. The Student Athlete Association (SAA) also conducts community service and fundraisers as part of their participation in athletics.

Bloomfield College is a Division II school. Several student athletes have garnered recognition for their accomplishments both on and off the field. Eighteen students were honored on the CACC All-Academic Teams and the Capital One Academic All American Teams.

The men’s soccer team reached the CACC opening round. The men’s basketball team were the CACC tournament champions for the fifth time in ten years under coach Gerald Holmes and the NCAA East Regional Final Participant (second time in school history) and reached the NCAA tournament for the fourth time in school history. Men’s baseball reached the CACC tournament quarterfinals for the second time in four seasons with a winning record of 20 victories for the first time since 2006.

Women’s basketball reached the opening round of the CACC tournament. Women’s soccer qualified for the NSCAA Team Academic Award which is given to programs that have above a 3.0 team GPA. Women’s softball reached the CACC tournament final for the first time in Division II history.

Both men’s and women’s cross country placed fourth at the CACC championships.

## Career Services readies students for success

Bloomfield students are career minded. In 2011-2012, 915 individual students had at least one appointment or attended at least one workshop or program. The Career Counselors reviewed and critiqued 1,117 student and alumni resumes for posting on the new job board, BC Career Connections, powered by the online program, CSO. The four career fairs offered in September, November, January and April brought a total of 159 employers to campus. Programs and workshops received an overall 4.6/5 satisfaction rating. Popular programs included the annual Federal Jobs Career Panel with representatives

*If you would like to make the difference in the life of a student by establishing your own scholarship fund, please contact the Office of Institutional Advancement at [advancement@bloomfield.edu](mailto:advancement@bloomfield.edu) or call 973-748-9000 X1293.*

from the FBI, DEA, and US Customs and Border Protection and the first Annual Winter Career Conference with presentations on Social Media and Personal Branding, The Graduate School Decision, What Employers Look for in Candidates. Students were successful in securing internships, including a pioneer science student at Colgate Palmolive.

The Middle States Accreditation Team commended the Center for Career Development for their work on assessment and for offering career development programs.

“ I am grateful to you for helping students pay for college since so many us have trouble with our college loans and expense. **I am a very hard worker and take my education very seriously.** I know how lucky I am to receive a scholarship. ”

— Robert Wilson, Political Science  
Drinker Biddle & Reath/Bernard M. Shanley  
Endowed Scholarship Fund

## It does make a difference

Scholarships can make the difference between getting an education and not. Dreams are fulfilled by generous benefactors who establish both annual and endowed scholarships. These scholarships were set up in the fiscal year 2011-2012:

*S. Jervis Brinton Jr. (hon. '12) Annual and Endowed Scholarship Funds, established by Toni Marotta-Brinton*

*Dorothea B. Frank (hon. '11) Endowed Scholarship Funds, established by Trustee Dorothea Benton Frank (hon '11)*

*Mabel E. Pennick '95 Annual Scholarship, established by the Estate of Mabel E. Pennick '95*

*Glenn M. and Marilyn B. Reiter Endowed Scholarship Fund, established by Trustee Glenn and Lyn Reiter*

*Renee '82 and Ralph Selitto Annual and Endowed Scholarship Funds, established by Trustee Renee Baldan-Selitto '82 and Ralph Selitto*

*Adrienne M. Szeremany Endowed Scholarship established by Rev. J. Richard Szeremany '57*

*Bloomfield College Alumni Association Annual Scholarship Fund established by the Bloomfield College Alumni Association*

## The results – Commencement 2012

266 students graduated during the 139th Commencement exercises: 168 received a BA, 90 received a BS, and for the first time in the College’s history, eight graduated with a MS in Accounting. ■

# Honor Roll of Donors

## Honor Roll of Donors

### CHAIRMAN'S CIRCLE

\$100,000 +

Fidelity Charitable Gift Fund  
The Margaret A. Cargill Foundation  
Mr. Donald A. Ross '52

### TRUSTEE'S CIRCLE

\$50,000-\$99,999

Ms. Carolyn Roberson Glynn '69  
Independent College Fund of  
New Jersey  
Mr. and Mrs. Archie M. Palmer Jr.  
The Roche Foundation

### PRESIDENT'S CIRCLE

\$25,000-\$49,999

Dr. Nicholas Carozzi  
Charlotte W. Newcombe Foundation  
Community Foundation of  
New Jersey  
Gourmet Dining LLC  
Mrs. Antonia S. Marotta-Brinton  
Nicholas H. & Margaret H. Carozzi  
Charitable Foundation  
PNC Wealth Management  
Presbyterian Foundation  
Synod of the Northeast  
Reverend J. Richard Szeremany '57,  
H'76  
Wells Fargo

### DEAN'S CIRCLE

\$10,000-\$24,000

Atlantic Philanthropic Services Co., Inc.  
BD  
Mr. and Mrs. John D. Campbell  
Church of the Annunciation  
Clairoan Foundation  
Mr. John J. Delucca '66  
Edward & Stella Van Houten  
Memorial Fund  
Estate of Mabel E. Pennick '95  
Ms. Patricia A. Etzold  
Mr. James R. Gillen  
The Glenn N. Howatt  
Foundation, Inc.  
Dr. Maureen C. Grant  
Ms. Rosemary T. Iversen  
Mr. Nicholas Jacangelo '64  
The Jewish Community of  
Metrowest  
Johnson & Johnson Corporate Giving  
Program  
Mr. L. Donald LaTorre  
Mr. Richard A. Levao  
M&T Investment Group  
Mr. Martin McKerrow  
Dr. Richard A. Pollack H'99  
Mr. and Mrs. Sanford B. Prater  
Ms. Anne Moreau Thomas  
Mr. Hank Uberoi  
The Uberoi Foundation  
Walter & Louise Sutcliffe Foundation  
Mr. Joel M. Weiner '66

### KNOX SOCIETY

\$5,000-\$9,999

Ms. Barbara Appel  
Ms. Renee Baldan-Selitto '82  
Barbara Appel Irrevocable Living  
Trust  
Mr. Bernard S. Berkowitz, Esq.  
C.R. Bard Foundation, Inc.  
Drinker Biddle & Reath LLP  
Ms. Emer D. Featherstone  
Dorothea B. Frank H'11  
Mr. Stephen A. Glasser  
The Graymer Foundation  
Investors Bank Charitable  
Foundation  
J.P. Morgan  
Mr. James C. Kellogg  
Ms. Martha McEvoy LaBare  
Mr. Richard C. Larsen '66  
Mr. Craig B. Lindsay '76  
Mrs. Toni B. McKerrow  
The Provident Bank Foundation  
The Prudential Foundation  
Matching Gifts  
Robert Sydney Needham Foundation  
The Estate of Donald C. Ryan  
Sandpiper Partners LLC  
Mr. Ralph W. Selitto, Jr.  
Stephen & Mary Birch Foundation,  
Inc.  
Mr. William H. Turner, III  
Ms. Nancy H. Van Duyne  
Mrs. Mary Jane Van Fossan  
Vanguard Charitable Endowment  
Program  
Mr. Josh S. Weston

### SEIBERT SOCIETY

\$2,500-\$4,999

The Alumni Association of the  
Frances M. McLaughlin Division  
of Nursing  
Barclays Wealth  
Investors Bank  
Novartis Pharmaceuticals  
Corporation  
Presbytery of Newark  
Ms. Hannah Richman  
Dr. Jason Slosberg  
State Farm Companies Foundation

### WESTMINSTER SOCIETY

\$1,000-\$4,999

Mr. Stephen N. Adubato Jr.  
Mr. Michael B. Alexander  
Ms. Tosheia N. Ballard '95, Esq.  
Dr. R. Virginia Bodden '52  
Mr. Gordon B. Bramwell '72  
Mr. Kwi Brennan  
Brinton Eaton Associates, Inc.  
Ernesto L. Butcher LLD H'05  
Ms. Marilyn R. Coombe '47  
Dr. John G. Cross  
Ms. Diana Drysdale  
Mr. Robert J. Estler '64, H'89  
Ms. Catherine M. Gallo '84

Dr. Peter K. Jeong  
Mr. Marc and Mrs. Ellen Kaplan  
Reverend Ernest M. Kosa '45 and  
Mrs. Barbara Kosa  
KPMG Foundation  
Dr. Patrick J. Lamy  
Ms. Nancy L. Lane  
William M. Lewis Jr. LLD '07  
Liberty Mutual Insurance Co./  
Fleet National Bank  
Mr. John T. Lyons '71  
The MBA3 Foundation of The Ayco  
Charitable Foundation  
Dr. Maryann Mercer '69  
Mews Metals Trading LLC  
Mr. Sean T. Monaghan, Esq.  
Dr. and Mrs. P. Henry Mueller H'91  
Dr. John F. Noonan  
Mr. John G. Panagakis '85, CEBS,  
ChFC  
Paramus World Motors, LLC  
Dr. Marilyn Pfaltz H'06  
Presbyterian Church of Upper  
Montclair  
Presbyterian Church on the Hill  
Presbyterian Women of Central  
Pres. Church  
PSEG Foundation  
Mr. Glenn M. Reiter, Esq.  
Mr. Vincent S. Rospond, Esq.  
Schering-Plough  
Mr. Robert Senior '68  
Mr. Charles E. Stealey '65  
Ms. Adebola A. Taiwo '09  
Dr. Marion A. Terenzio  
Mr. Robert C. Troccoli '71  
The UPS Foundation  
Verizon

### FOUNDER'S CIRCLE

\$500-\$999

Mr. Edward Andrew '70  
ASCO  
Bloomfield Presbyterian Church  
on the Green  
Mrs. Joan M. Calder '62  
Mr. G. Donald Calder  
Dr. John L. Carey  
Mrs. Catherine Carozzi  
Dr. Thomas H. Cavicchia '51  
Mr. Durant D. Charleroy '64  
Professor Robert D. Collmier '74  
Mr. Geoffrey Connor  
Mrs. Daliza K. Crane  
Mr. Patrick W. Crane  
Dr. John Cruzeiro Jr. '66  
Mr. Vernon M. Endo  
Dr. Cheryl L. Evans  
Reverend Loisann Furgess-Oler  
Mr. Joseph Gallo '72  
Mr. Thomas D. Gibson '72  
Ms. Kathleen A. Guerino  
Mr. Lawrence E. Hayter '87  
Mr. Edward C. Heftman '67  
Mr. and Mrs. J. Maurits Hudig  
Ms. Emy M. Kamihara  
Mr. John W. Keithler and  
Mrs. Karen D. Keithler '81

Reverend Alick M. Kennedy '55  
Mr. A. Duncan Kidd  
Mr. Gregory Klimko '68  
Ms. Cynthia Lachnicht '84  
Mr. Robert A. McAulliffe '64  
Dr. Frances M. McLaughlin '45, H'90  
Mr. Henry C. Meyer Jr.  
Mr. H. Richard Minette '66 and  
Mrs. Nancy Marshall Minette '67  
Mr. Patrick N. Mitchell '05  
Morgan Stanley  
C/O Cybergrants, Inc.  
Mr. John K. Murdock '73  
Dr. Jeanne Nutter  
Mrs. Lori Ann Palmieri  
Passaic County Community College  
Dr. Arthur Allan Patchett H'01  
Presbyterian Women of the West  
Jersey Presbytery  
Presbytery of New Brunswick  
PSEG Foundation Educational Matching  
Gift or Volunteer Program  
Roche  
Ms. Dinma V. Rodriguez-Rios '69  
Mr. Richard F. Rovito '75  
Second Presbyterian Church  
Dr. Adrian A. Shelby H'98  
Trinity Episcopal Church  
UBS Financial Services Inc.  
Mr. William E. Varley '66  
Mrs. Doris M. Warner '44  
William H. Connolly and Sons  
Mr. James P. Wollner '71  
Xcel Federal Credit Union  
George T. Zahorian III '70 D.O.

### DEACONS CLUB

\$250-\$499

AFRC Inc.  
All Saints' Episcopal Church  
Mr. Robert Armbruster '62  
Mr. Peter R. Bennett '53  
Mr. Copeland G. Bertsche  
Mr. Peter J. Botzenhart '95  
Bristol-Myers Squibb Foundation  
Brookdale Shoprite  
Mrs. Theresa Bucherer  
Mr. David G. Burdick '67  
Mrs. Dorothy M. Carey  
Reverend Dr. Peter H. Carey Jr.  
Mr. William '72 and  
Mrs. Deborah R. '72 Chmerka  
Dr. James F. Clark '67  
Cocoa Urology Associates, Inc.  
Mr. Vincent A. Cogliano Jr. '79  
Mrs. Josephine Cohn  
Mr. Kevin J. Collins, Esq.  
Mrs. Paula A. Craig '94  
Mr. William Craven '66  
Mr. Douglas M. Davies '64  
Mrs. Nancy Dotoli '84  
Mr. Thomas Dunn  
Reverend Eleanor J. Edwards '70  
Reverend George I. Evans '50  
Mr. John Fallon  
Ms. Margaret Craney Faust '66  
Dr. Richard Finneran '65  
Mr. William J. Forlenza '65

Mr. Luigi Furnari '52  
Mrs. Eleanor Webber Gibson  
Dr. Richard E. Hart  
Dr. Joan W. Higgins '56  
Dr. Hedy Bishop Hubbard '66  
Mr. Clifford A. Jacoby Jr. '60  
Mr. Richard M. Jaraba '66  
Mr. Richard L. Krajewski '63  
L.J. Gonzer Associates, Inc.  
Mrs. Doris M. Larsen  
Mr. Manuel Losada  
Mr. and Mrs. W. Thomas Margetts  
The Margetts Foundation  
Martin O'Boyle Landscaping  
Company, Inc.  
Mrs. Sheryline Y. McGee '94  
Mrs. Pegeen P. Mendizabal '68  
Merck Partnership For Giving  
Mr. William Metzger '68  
Mr. Ralph Milnes  
MSP Digital Marketing, LLC  
Mr. Michael B. Murphy '96  
Murray Feiss  
Mr. Jean-Pierre Naegeli  
Reverend Dr. Gregory A. Cross '50  
Mrs. Delores Cupo Cross '50  
Mr. and Mrs. Jack A. Palazzo '95  
Ms. Ruth Pante  
Dr. Sueli S. Petry '97  
Mr. Stanley Porteur  
The Provident Bank  
Mrs. Cherry Provost  
Mr. Frank V. Querques Jr. '70  
Mr. John A. Racioppi '80  
Rainbow Travel  
Ms. Joan C. Roane '62  
Dr. Steven M. Rose  
Mr. Kenneth A. Rowe, CPA  
Saint Dunstons Church  
Senorita's Mexican Restaurant  
Dr. Neddie Serra  
Mrs. Pauline J. Sharp '65  
Mrs. Susan Morris Silver '62  
St. Thomas Episcopal Church  
Mrs. Danuta L. Steglinski '97  
Mrs. Ruth Haycock Story '54 and  
Reverend Harold Story '54  
Mr. John M. Tanzola '74  
Mrs. Dianne M. Tintorer and  
Mr. D. Henry Tintorer '66  
Ms. Sandy Trapp  
Mr. Salvatore Trentacoste  
Dr. Carolyn R. Tuella  
Mr. Edward Vanderhey '54  
Warren Point Presbyterian Church  
Mrs. Sonia B. White  
Mr. Cyprus T. Williams '94  
Ms. Wendy A. Ziegenfus '96  
Ms. Phyllis Zoon

### BACCALAUREATE CLUB

\$100-\$249

Mr. Alan Abraham '66  
Advanced Technologies &  
Services, Inc.  
Dr. William '59 and Mrs. Nancy  
M. '60 Aierstok Jr.  
Mrs. Geraldine F. Aksdal '99  
Mr. Victor M. Alicchio Jr. '77  
The Allstate Foundation  
Mrs. Virgie B. Alston-Rodgers '84  
Ms. Linda J. Anderson '71  
Mr. and Mrs. John J. Andreacci '69

Mrs. Zelma Andrews '04  
Mrs. Janet Andril '75  
Mr. Michael Angelo Jr. '60  
Honorable Frances Lawrence  
Antonin '65  
Ms. Nettie M. Archie '84  
Ms. Kyung J. Artha '04  
Mrs. Nancy Bacci  
Mr. Robert L. Baker '83  
Mr. David A. Baker '70  
Bank of America Matching Gifts  
Ms. Gwendolyn Barnes '99  
Ms. Karen E. Barton '77  
Mrs. Janet Battersby  
Mr. Gilbert W. Beck '71  
Mrs. Cynthia Ann Beck '90  
Ms. Sara Beiro '10  
Mrs. Marren C. Berthold '66  
The Bethwood Corporation  
Mrs. Colleen Betzler  
Reverend Robert LeRoy Blackwell  
Mrs. Joan Blessing '56  
Mrs. Miriam Cunningham Block '79  
Bloomfield Electrical Supply Co., Inc.  
Bloomfield Steak & Seafood  
Reverend Benjamin E. Blumel '51  
Dr. Joseph W. Boecker '65  
Reverend Dr. Paul O. Boger Sr. '62  
Mr. Richard E. Boschen Jr. '65  
Mr. Paul R. Bowlby '75  
Mr. Abdulgani S. Braimah '03  
Brookdale Dental Group c/o Anthony  
& Vincent Devincintis BMD  
Ms. Dorothy Clinton Brown '56  
Dr. David L. Bucci '59  
Reverend William A. Carhart '47  
Mrs. Lisa Caruso '64  
Ms. Susan Catanio-Agins '74  
CCL Enterprises, LLC  
Cedar Hill Golf & Country Club  
Dr. John Chironna Jr. '53  
Christ Church of East Orange  
New Jersey  
Mrs. Jeanann Z. Cimino '84  
Mr. Christopher Clark  
Ms. Eileen D. Cohen '79  
Ms. Ann V. Commisa  
Mrs. Rachael A. Cooper  
Ms. Martha J. Curry '69  
Mr. Anthony A. D'Ambrosio '64  
Mr. Robert S. Damiano '69, Esq.  
Mrs. Faith M. DeRogatis-Merrill '54  
Ms. Lisa Ann Dews '02  
Dr. Maryann Di Liberto  
Mrs. Barbara J. DiNapoli '78  
Reverend George R. Doering Jr. '62

Mr. John V. Donaldson '68  
Eli Lilly Company Foundation, Inc.  
Mrs. Lorraine E. Erickson  
Reverend Stephen A. Estok '63  
Reverend Arthur J. Faix '55  
Mr. Daniel Favara '68  
Ms. Theresa A. Fierro '86  
Mr. Charles L. Fischer Jr. and  
Mrs. Marilyn Bell Fischer '68  
Mr. and Mrs. Mered Frankel '72  
Mrs. Joni Frascati  
Garden State Yoga  
Mr. Ronald Gaskill '66 and  
Mrs. Kathleen Gaskill  
Mr. Ronald Gasparinetti '81  
The GE Foundation  
Reverend Richard B. Gibbins '52  
and Mrs. Cynthia B. Gibbins  
Ms. Cheryl Goins '04  
Grace Lutheran Church  
Mr. Charles P. Grandy '83  
Mr. Peter A. Grefrath  
Mrs. Miluska V. Guerreiro '10  
Mr. Randall B. Guthrie '70  
Mrs. Marilyn S. Guynn '55  
Mrs. Donna L. Hansbury '71  
Mr. Ken Heaslip  
Mrs. Maryanne Hegarty  
Ms. Betty K. Heinig  
Ms. Barbara A. Heinrichs '75  
Mrs. Susan M. Hill  
Mr. J. Robert Hillier  
Mr. Robert W. Hoag '51  
Mr. Craig E. Hobaugh '67  
Mr. Gerald Holmes  
Mr. William Holzhauser '65  
House of Prayer Episcopal Church  
Mrs. Janice Humphries '82  
Jersey Pictures Inc.  
Mrs. Jacquelyn M. Jeter '77  
Reverend Robert C. Jiggetts Jr. '66  
Mr. Peter M. Johnson '69  
Mr. Richard G. Johnson '92  
Justice Design Group, LLC  
Mr. Emanuel and Mrs. Mildred  
Kaplan  
Mrs. Jill M. Keasel '61  
Mr. G. David Kirk '61  
Mr. Milan Kovac '73  
Ms. Nancy C. Koyanik '81  
Mr. Michael J. Kramlick '71  
Ms. Barbara Johnson Kreiss '56  
Ms. Nora Krieger  
Ms. Barbara J. Kukla '63  
Mr. Michael Lampariello '70  
Mr. James L. Lanzarotta '63

Ms. Linda L. Leak '84  
Mr. William M. Lee '80  
Mrs. Stephanie Lewis '04  
Mr. Thomas A. Liberti '80  
Ms. Joanne E. Lincoln '69  
Mr. Dennis L. Linder '81  
Dr. Paul A. Lochner '64  
Ms. Patricia A. Loers '75  
Mrs. Helen Arcurio Losada '56  
Lyndhurst Diner, Inc. DBA  
The Chandelier  
Mrs. Marcia MacDonald  
Mr. Glenn J. Maciag '87  
Reverend Tony MacNaughton '64  
Mr. William E. MacWhorter '74  
Ms. Andrea Maddalone '99  
Mr. Ronald P. Manus '64  
The Merkel Corporation  
Mr. Albert J. Marron '57  
Mr. Laszlo J. Marshall '97  
Ms. Lakevia S. Massenburg '04  
Mr. Frank Massotto '71 and  
Mrs. Georgina Plaia Massotto '69  
Mr. J. Thaxton Mauzy Jr.  
Mrs. Donniss Mazzucco '64  
Mrs. Marjorie Miller McChesney '45  
Mr. Raymond E. McConchie Jr. '69  
Mr. Patrick G. McCormack '69  
Mr. Gilbert McGill Jr. '80  
Mr. John McGoldrick  
Mr. John J. McGrath Jr. '83  
Mr. Alan E. McMahon '64  
Mr. Gerald McTigue  
Mr. William B. Meehan '68  
Mr. James W. Meirose '81  
Dr. Lazaros Michailidis  
Ms. Evelyn M. Miller '84  
Mr. Andrew William Minczuk '74  
Mr. David B. Moorman '74  
Dr. Phyllis K. More  
Mr. Sidney D. Morginstin '72  
Mrs. Marie Stadler Morrison '66  
Ms. Margaret Moss '70  
Dr. Joseph M. Most  
N.L. Arce, CPA & Co., Inc.  
The New Angelo's Pizzeria  
Mr. Harry A. Nord '82  
Mrs. Cindy L. Orlick-Poole  
Mrs. Madeline C. O'Sullivan  
Mrs. Joanne Paduch '84  
Parkmont Capital, LLC  
Ms. Elaine E. Parnell '84  
Mr. Michael M. Paulik '60  
Mr. and Mrs. Franklin E. Pellegrin Jr.  
Mrs. Lois B. Pennington '48  
Pfizer Foundation Matching  
Gifts Program  
Ms. Kristi R. Pflug '09  
Ms. Marie Pierre '10  
Mr. Mark Pirone '11  
Ms. Eileen Polazzi  
Mrs. Judy Porsavage  
Mr. and Mrs. Robert Porsavage '68  
PPC Benevolence Fund  
Presbyterian Women First  
Presbyterian Church  
Dr. Anthony Procopio '64  
Mrs. Dorette J. Putonti '70  
Mrs. Annette Querques  
Mrs. Marie Quinn '72  
Mrs. Nicole Quinn  
Mrs. Evelyn Rappaport '66

I would like to thank those on the reviewing committee for selecting me to become a recipient of this award.

**The Mabel E. Pennick Annual Scholarship helps me financially and makes me want to volunteer my time to more community service projects.**

— Katherine Aumann, Chemistry  
Mabel E. Pennick '95 Annual Scholarship Fund (Bequest)

**BACCALAUREATE CLUB**  
\$100-\$249 (continued)

Mrs. Veronica J. Rasky  
Mr. and Mrs. Joseph R. Rasky '64  
Reverend Ronald Rathje '55  
Mr. and Mrs. James F. Reese  
Ms. Sara Hayes Reinhardt '62  
Mr. James Rekulak '71  
Mr. Randy Richman  
Mr. David Rigg '65  
Mrs. Julia G. Riley '69  
Ms. Travelon Roberson '92  
Dr. Leonard Roberts  
Mr. David S. Robertson '62  
Mr. DeRomuald Romulus '09  
Mr. Paul Ross '77  
Dr. Paul M. Russo  
Mr. Barton K. Ryan '60  
Mr. Emil Scerbak '62  
Reverend Dr. Nancy Schluter  
Colonel Robert '67 and Mrs. Lyane B. '66 Scoskie  
Mr. Samuel Seamans '68  
Reverend Richard Seigfried '59  
Mr. Kevin J. Shea '72  
Mr. Richard N. Silipigni '66  
Mr. John B. Skowronski '91  
Reverend John E. Slater Jr. '44  
Dr. Mary J. Slavin '91  
Mr. Alfred A. Smith '57  
Ms. Catherine R. Smith  
Mr. Ed Smith  
Ms. Patricia A. Smith '96  
Mr. Juan M. Solomon '97  
Mr. Paul Spina '69  
Mrs. Evelyn Staba '45  
Ms. Janice Stanzione '66  
State Street Grill  
Stobbs Printing Co., Inc.  
Mr. Skip Stoner '66  
Reverend Stephen E. Sweet '76  
Taylor Rental  
Ms. Mirlande Teleus '08  
Reverend Christian A. Tirre '56  
Mr. Stephen Tisdalle  
Mrs. Jennifer Toresco-Amorosa '72  
Mr. Graydon R. Toulmin '66  
Mrs. Judith C. Turner  
UBS Wealth Management Employee Giving Programs  
Mr. Joseph A. Urso '65  
Ms. Joanne L. Vaccaro-Kish '75  
Dr. Sandra Van Dyk  
Mr. Richard C. Vigeant '59  
Mr. Frank J. Wagner '70  
Dr. Marcie F. and Dr. Frederick H. Walker '76  
Mrs. Judy Walters  
Mr. Richard E. Walters '83  
Mrs. Joanne Siano Warren '62  
Dr. Stephanie D. Wasserstrum  
Mr. Lawrence Waters  
Mr. Ralph M. Watson '54  
Reverend John M. Whallon  
Mr. Selvin J. White Jr. '97  
Mr. Robert C. Williamson '68  
Captain and Mrs. William Edward Wynne  
The Xerox Foundation  
Mrs. Margaret M. Zeiner '68  
Mrs. Edwina H. Zengerle '52  
Mr. William F. Zick '59  
Mr. Zev Ziegler '06

**IN MEMORY**

**In Memory of Robert Ancmon**  
**In Memory of Mrs. Hattie Burke**  
**In Memory of Dr. Peter Kovanic**  
**In Memory of Professor Harold Kruse**  
**In Memory of Professor Rita Salins**  
**In Memory of Irving Waltcher**  
**In Memory of David Wasserman**  
Mrs. Eleanor Webber Gibson

**In Memory Of Joel Berwick**  
**In Memory Of Janice Sorkin**  
Annette Heyman  
Mr. and Mrs. Marc and Ellen Kaplan

**In Memory of S. Jervis Brinton, Jr.**  
Mrs. Antonia Marotta Brinton  
Mrs. Colleen Betzler  
Brinton Eaton Associates, Inc.  
Community Foundation of New Jersey  
Ms. Betty K. Heinig  
Mr. and Mrs. James C. Kellogg  
Ms. Kathleen A. Guerino  
The Margetts Foundation  
Mr. and Mrs. William T. Margetts  
Mrs. Nicole Quinn

Ms. Hannah Richman and Dr. Jason Slosberg  
Mr. James Sawyer

**In Memory Of Adeline Cohen**  
Mr. and Mrs. Emanuel and Mildred Kaplan  
Mr. and Mrs. Marc and Ellen Kaplan

**In Memory of Rev. William B. Furgess, Class of 1930**  
Reverend Loisann Furgess-Oler

**In Memory of Kathleen Rowe Gallo N '73**  
Mr. Gordon B. Bramwell, '72  
Mrs. Theresa Bucherer  
Mr. Brett A. Burns  
Mr. Christopher Clark  
Mr. Joseph Gallo, '72  
Hair Shapers Plus, LLC  
Mrs. Ann Goss  
Ms. Sara Greenisen  
Justice Design Group, LLC.  
Mr. J. Thaxton Mauzy Jr.  
Mrs. Linda Papol  
Mrs. Marilyn S. Raiken  
Mrs. Madeline C. O'Sullivan  
Mr. Kenneth A. Rowe, CPA  
Mrs. Valerie Sands

Mr. Ed Smith  
Mr. Stephen Tisdalle  
Dr. Stephanie D. Wasserstrum  
Zoppo Insurance Agency

**In Memory Of Patrick Grant**  
Mr. Kevin Cummings  
Dr. Maureen C. Grant  
Independent College Fund of New Jersey

**In Memory Of Harry and Ellen Heyman**  
**In Memory Of Alma Sheller**  
Mr. and Mrs. Marc and Ellen Kaplan

**In Memory Of Scott H. Kaplan '02**  
Annette Heyman  
Mr. and Mrs. Marc and Ellen Kaplan  
Mews Metals Trading LLC

**In Memory Of Lorraine Kohut, Class of 1951**  
Mrs. Shirley Tilton McGatha '51

**In Memory Of Dr. Frank and Isabel Pellegrin**  
Mr. and Mrs. Franklin E. Pellegrin Jr.

**IN HONOR**

**In Honor of Archie Palmer**  
Mr. Peter A. Grefrath

**In Honor of Carolyn Roberson Glynn '69**  
Mrs. Susan M. Hil  
Mrs. Judy Porsavage

**In Honor of Mr. Marc and Mrs. Ellen Kaplan on their 42nd Wedding Anniversary**  
Ms. Wendi F. Kaplan

**1868 LEGACY SOCIETY**

Mr. William '72 and Mrs. Deborah R. '72 Chemerka  
Mr. Kevin J. Collins, Esq.  
Mr. Anthony A. D'Ambrosio '64  
Reverend Eleanor J. Edwards '70  
Estate of Mabel E. Pennick '95  
The Estate of Reverend Robert J. Gillespie '52  
Mrs. Laura Peterson Johnson '51  
Ms. Nancy L. Lane

Mr. Richard A. Levao  
Dr. Maryann Mercer '69  
Mr. Luther S. Roehm  
Reverend Dr. Nancy Schluter  
Mr. Kenneth R. Schorr '78  
Mrs. Cynthia B. Smith '81  
Mr. Charles E. Stealey '65  
Reverend J. Richard Szeremany '57  
Mr. Joel M. Weiner '66

**INDEPENDENT COLLEGE FUND OF NEW JERSEY**

Bloomfield College continues to benefit from generous corporate and foundation support given through the Independent College Fund of New Jersey. Begun in 1953, the Fund makes a single, united annual request to corporations and foundations on behalf of the 14 member colleges. For 57 years, the Fund has continued to secure corporate financial support for the State's independent colleges and to promote a greater understanding of the importance of maintaining the opportunity for choice between public and private education.

The Independent College Fund of New Jersey represents all of the State's fully accredited, privately controlled colleges and universities, except those that are engaged primarily in religious studies.

It's an honor to receive this scholarship because it continues to prove to me that hard work 'pays off.' **I am looking forward to accomplishing bigger and greater things.**

— Roydon Pellew, CAT

Joel M. Weiner '66 Annual and Honors Program Scholarship Funds

# Roche Foundation continues its Emerging Leaders in STEM with a gift to Bloomfield College

There exists a nationwide effort to draw more students into the STEM (science, technology, engineering and math) subjects. Leading the way, the Roche Foundation has given Bloomfield College a second gift to continue the work in bringing interested students into the STEM careers, especially first generation students and underrepresented populations.

The goal of the Emerging Leaders in STEM (ELS) program is to increase the number of minority students studying the sciences and mathematics. Using several well planned phases, students will be introduced to the STEM subjects through a variety of channels; pre nursing majors and first year students will be introduced through their general education courses, high school students will be exposed to STEM careers through recruitment activities, and monthly meetings, coaching and advisement for current STEM majors will focus on retention in the STEM subjects.

The Roche Foundation's gift last year allowed many more students to participate in the Louis B. Stokes Alliance for Minority Participation or LSAMP, a consortium of nine colleges and universities in New Jersey that focus on recruiting and retaining students in the STEM subjects. By adding the Emerging Leaders in STEM to the LSAMP program, the number of participants grew significantly. The LSAMP program is expected to increase their student participation by 50 percent and the Roche Foundation is making this possible.

"We appreciate the partnership with Roche Foundation and its commitment to our students who are interested in pursuing careers in the fields of science, technology

and mathematics," says Richard Levao, president of Bloomfield College. "Together, we are addressing the critical national shortage of trained STEM professionals."

The ELS program will consist of three phases. The first is to develop a bigger pipeline of students who are interested in the STEM subjects and need more information about careers available to them. This phase will include reaching out to high school students as well as current pre nursing and first year students who are involved in the new Geographies of Experience courses at the college. This series of courses is designed to give students a wide range of academic experiences to broaden their interests and potential career paths. The second phase is to recruit ELS scholars and support their transition into or retain them in the STEM subjects through their involvement in LSAMP activities, coaching, mentoring, and field trips. The third phase fully engages the ELS scholars either by full participation in LSAMP or as an LSAMP associate and by declaring a STEM related major. Throughout all the phases, coaching and advisement is available by college faculty and staff.

"We are pleased to be able to provide additional funding for the Bloomfield College STEM program," said Patricia Hughes, executive director, Roche Foundation. "Identifying students with a

capacity for math and science and then unlocking the wonders of these subjects for them is something that is sorely needed if we want students to compete on a global scale. It is clear that the teachers and staff at the school have demonstrated their commitment to this endeavor and we applaud their efforts."





# DEACON'S FEST

ALUMNI HOMECOMING • FAMILY DAY • OPEN HOUSE



Ken Heaslip, associate professor of accounting, Bob Collmier '74, chair of the business division, and new BCAA council member John Skowronski '91.



Ernie Kosa '45 and Sharif Thomas '15

## A return to BC

Deacon's Fest boasted a beautiful day with more than 400 people on campus, from alumni, to current students, to prospective students and their parents investigating all that Bloomfield College has to offer.



From left are John Murdock '73, Barbara Kosa, Ernie Kosa '45, John Delucca '66, Rich Rovito '75 and Carolyn Roberson Glynn '69.

Romeo Romulus '09 and Trustee and BCAA President John Delucca '66.



Bloomfield College Alumni Association member Tina Plaza '09 enjoys the festivities with her son.



William Gonzalez '94 with his family



Athletic Director Sheila Wootton '85 and Trustee Carolyn Roberson Glynn '69.



Luis Rodriguez '11 and Jose Infante '12.



Professor Jeanne Nutter with bookstore manager Errol Narvaez '09.

## Class of 1954

**Donald H. Frank** writes, "In September, Anne and I drove to San Luis Obispo, California to visit with Ralph and Jo Watson. We have not seen one another for over 50 years. It was a celebration of life as we reviewed things about our classmates. We both were in the Class of 1954. Ralph and I now live in West Coast states so that fellow alumni are few and far between. It was a great weekend for both families."



**Larry Dunster '63** sent a photo of him and his wife Susan on their 50th anniversary. The ship is the Queen Mary 2, "but the staircase looks a lot like the Titanic!"

## Class of 1961

**Jeanette Bethea** was invited to be a guest speaker at the candlelight vigil for those who had died as a result of domestic and sexual violence. The sponsor is Sarah's Refuge, Inc., a crisis intervention program for victims of domestic violence or sexual violence in Duplin County, Warsaw, North Carolina.

**The Rev. William P. Anderson, Sr., PhD, DD**, Professor Emeritus, Religious Studies, The University of Dayton emailed us. "My essay in the University of Dayton Review (a few years ago) titled: "John Calvin: The Man, His Theology and Ethics" is being included in a multi-volume work on Literary Criticism. My essay will appear in the volume on Literary Criticism — John Calvin. I hope all is going well at Bloomfield. Pax."

## Class of 1963

**Richard Krajewski** has been busy since retirement in 2005 after serving churches for 40 years in KY and WV. Beside moving to south Louisiana and living through and helping folks recover from Hurricanes Katrina, Rita, Gustav, Ike, Lee, and Isaac and the BP disaster, he has written with his wife, the Rev.

Kristina Peterson PhD, *Grounded in Faith, Inspired to Action: Bayou Women Own their Recovery*, a chapter in *The Women of Katrina*. They have a chapter to be published in a book on Disaster Mitigation. He is a founding board member of the Natural Hazard Mitigation Association, an international group dedicated to "making communities safe from hazards" and is helping the Presbytery of South Louisiana develop the Wetlands Theological Education Project. Dick has been made a fellow in the Society for Applied Anthropology for his work in developing long-term grassroots responses to disasters. He does resiliency research and works with graduate students at the Center for Hazards Assessment Response and Technology at the University on New Orleans and serves the Bayou Blue Presbyterian church as parish associate. He is still active in the Presbytery; chairing the mission committee and serving on two others and council. Dick lives in Gray, LA. - the heart of Cajun country. He thinks of BC almost daily and

gives thanks for the college and the influence of Dr. Betty Ritchie.

## Class of 1965

**Rick Boschen** let us know that he has been elected to a second two-year term Director of the Realtors' Association of Martin County here in Florida. He writes, "I never thought I would be elected this second time. It is very rare but a wonderful responsibility to the total membership. Be well."

## Class of 1967



**C. Wayne Hood '67** and his wife Sylvia on the Freedom Cruise in August 2012.

## Class of 1970

**Rob Till** sent an email and says, "Following four years of working in Montreal, I began working at Sheridan College (outside of Toronto in Oakville) in January of 1975. I retired as the Dean of Students of Sheridan College in April of 2012. Upon my retirement the Student Union renamed their boardroom in my honor and the athletic department created a student award in my honor to a student who combines citizenship and athletic excellence. I was the student president of the BCSA for 1969-70. To my knowledge I may be the only Canadian to attend Bloomfield. I was very proud of my time at Bloomfield and I believe it helped me to succeed both in business and my personal life. My wife Dorothy and I have two adult children, Adam and Jessica. Adam has two gorgeous daughters, Eden, 4 years old and Nora, 2 years old. I plan to do some consulting and bang that little white ball around a big field as much as I can."

## Class of 1976

**Michael Skalka** writes, "I am glad to have attended the college from 1972-1976, BA in Psychology because I met my wife Barbara, a nursing student at Bloomfield. I worked in the admission office from 1978-1990. My dream was to work in an art museum. I resigned my position at Bloomfield in 1980 and attended Rutgers' University in New Brunswick and in two years received a second BA in Art History. I immediately went to Syracuse University and completed my MFA in Museum Studies. I was recruited at a College Art Association meeting in Toronto, Canada in 1984 by the Director of Personnel to work in the Conservation Division at the

National Gallery of Art in Washington, DC. I have spent the last 28 years at the National Gallery moving up the ranks from an entry level program assistant to my position now as a department head overseeing the daily operations of the conservation division. I control both federal and trust funded spending, personnel management and am responsible for a large art materials archive. I am also the current chairman of an American Society of Testing and Materials (ASTM) subcommittee that writes manufacturing standards for the art materials industry. I paint in oil outdoors and travel extensively to meetings on art materials and for pleasure to paint the natural beauty of the landscape."

## Class of 1983

**Rich Walters** sent a note to say "I recently was promoted to VP of Client Relations at EA Berg, a Food Broker in Metro New York, where I have been for the last 11 years. I also volunteer for the First Tee Golf Program on weekends. My oldest daughter just started at the University of Rochester and my youngest is starting high school. Hello to all my 'very old' friends from the class of '83!"

## Class of 1985

**Deb Winters** was recently spotlighted in the Courier News because of her work in Africa. For the past 25 years, Deb, who is a nursing graduate, has devoted her time working as a nurse specializing in AIDS. She worked on the forefront of clinical trials for HIV/AIDS in New Jersey and was called by Columbia University to go to Uganda to train doctors and nurses working with AIDS patients. She

**Bruce A. Nelson '70** died in Midland Park, NJ, on October 5, 2012.

**Cynthia J. Rudden (Prins) '86** died in Raritan Township, NJ, on October 5, 2012.

**Marilyn E. Lubeck (Kostal) '82** died in Bennington, VT, on September 24, 2012.

**Diane D. Tuffy (D'Adamo)** died in Cornelius, NC, on September 8, 2012.

## IN MEMORIAM

**Charles E. Cowell Jr.** died in Atlantic City, NJ, on August 28, 2012.

**Kenneth J. Rouse '63** died in Egg Harbor Township, NJ on August 20, 2012.

**David L. Mohn** died in Whitehall, NY, on August 18, 2012.

**Joseph Messa Jr.** died in Paterson, NJ, on August 10, 2012.

**John W. Burdzy '75** died in Alexandria Township, NJ, on July 18, 2012.

**Dorothy Bohleber Ulrich, N'39** died as notified by her daughter.

**Margaret Sealey N'46** died in Nicholasville, KY, on July 5, 2012.

continues to return each year armed with new knowledge and supplies to help those in Africa who have little access to health care.

## Class of 1987

**Larry Hayter** has joined the board of the Pemaquid Historical Association, which manages the colonial-era Harrington Meeting House museum in Bristol, Maine. The church, completed in 1775, was restored to its original appearance in the 1960's, and is owned by the town of Bristol. A museum of local history now occupies the balcony of the church. He writes, "We're in Maine for 10 more days, then off to France for six weeks to celebrate my 70th birthday, so I'll miss Deacons Fest, but will try to be active in alumni affairs when we get back to NJ. We'll rent apartments in Paris, the Loire valley, the Luberon hill country of Provence, and two resorts on the Mediterranean, Collioure near the Spanish border, and Cassis near Marseilles. Can't speak French, but we survived without it when we went to France two years ago."

## Class of 1999

**Norma L. Rodgers, BSN, RN, CCRA** proudly writes, "I was informed that I will receive one of the New Jersey League for Nurses "Nurse Recognition" Awards. She is president, IFN/President-Elect, NJSNA.

**Daniel James Blumig** writes, "I now live in Nashville TN. Ran into Alumni Carl Ulysses (1997) in a gas station. Small world! Awesome!"

## Class of 2004

**Jacqueline Harvey** let us know, "I will be going to Trinidad on November 9, 2012, and will return to Kissimmee, Florida on March 12, 2013. I'm looking forward to spending Christmas in Trinidad with the parang music which is unique at Christmas and after the New Year launching of bands in preparation for the annual carnival parade in February 2013."

## Class of 2005

**Donna Fischer** writes, "Hi! My husband and I moved from Newark to Bloomingdale, NJ in 2008, and I continue to work for The Valley Hospital Foundation as Development Research Supervisor. This fall I am graduating with honors from Regis University (located in Denver, CO) with a Masters of Non-profit Management degree."

## Class of 2008

**Rachel Andre-Tomlinson** has been appointed to the Secaucus Housing Authority to fill a vacant seat. Andre-Tomlinson will be the youngest commissioner on the seven-member board, currently comprised of four men and two women. She would also become



the first African-American woman to serve on any municipal board in the town's history, according to Town Clerk Mike Marra. She could also quite possibly be the first African-American to serve on any board in the town's history, according to the former Mayor Paul Amico. Andre-Tomlinson, who grew up in Jersey City, moved to Secaucus two years ago. She works for a local non-profit World Changer Church New York as their social media manager in addition to working as a freelance journalist. Andre-Tomlinson recognized that there is a need for diversity on the housing authority and that she hopes to not only give voice to African Americans but to also represent other minorities such as Asians, Indians, and Latinos.

## Class of 2009

**Tina Plaza** earned her masters in public administration. She writes, "It's been a long time coming! I finished my Capstone Project back in the summer of 2012. Now, I am eagerly seeking out new and exciting ventures where I can

## CLASS NOTES (continued)

utilize the leadership skills learned. Bloomfield College is the vessel that started me on this journey of higher learning!"

### Class of 2011

CAT graduate **Carrie Hermann** did the animation for an XBOX Indie game titled Wilderbrook. It has its own facebook page: <http://www.facebook.com/wilderbrook>

### Class of 2012

Former Bloomfield College guard **Gage Daye** has signed a contract to play for the Sheffield Sharks of the British Basketball League for the 2012-2013 season. Arguably the best player in Bloomfield College history, Daye became the school's all-time leading scorer during his senior season. A first team

All-America selection by Daktronics, Basketball Times Magazine and the Division II Bulletin as a senior, the two-time CACC Player of the Year led Bloomfield to its first CACC Tournament championship since 2006 during his senior campaign in 2010-2011, and to the first Elite Eight in program history. His incredible play in the postseason saw the 6'2" sharp-shooter earn CACC Tournament, and East Regional Tournament MVP honors. During his brilliant career, Daye also earned Daktronics East Region Player of the Year honors, as well as an All-Met Player of the year selection. This will be Daye's second stint in the professional ranks, after spending time with the Fort Wayne Mad Ants of the NBA Developmental League during the 2011-2012 season.

## Craig Lindsay '76 elected as chairman of the Hong Kong Securities and Investment Institute

The 15th Annual General Meeting of the Hong Kong Securities and Investment Institute (HKSI) was held on December 5, 2012, during which the new board for 2013 was formed and **Craig Lindsay '76** was elected as chairman of the board. Craig has over thirty years industry experience working in major financial centers including New York, London, Tokyo, and now in Hong Kong. He has worked for Goldman Sachs and Tokai Asia and is currently the Managing Director and Chief Operating Officer of CITIC Securities International Investment Management (HK) Limited as well as the Chairman of China New Economy Fund Limited.

Chief Executive of the HKSI, Edith Ngan Chan said, "Mr. Lindsay has been a HKSI member since 1997 and he was inducted as a HKSI Fellow in 2007.



During a visit to the college in 2011, Craig talks business with **Nicholas Baglione '11**.

In the past fifteen years, he has served as a HKSI board director, in HKSI executive committee and examinations committee, and also chaired the membership committee, editorial committee, audit committee, and e-committee. Mr. Lindsay provides important links from our past achievements to the bright future."

The Hong Kong Securities and Investment Institute is a professional membership organization established in 1997 for the securities and investment industry in the region. Its mission is to set standards of professional excellence and integrity, contribute to

Hong Kong's role as a leading international finance center and enhance the capabilities and reputation of its members.

### Touching Lives A story that began over 40 years ago

**Ernie Kosa '45** was working in his study when the phone rang. "Are you Chaplain Kosa?" the caller asks. "Were you the chaplain for the third surgical hospital in Vietnam? I am so happy I found you!"

Jeff Carr was a young, frightened Cobra gunship pilot in 1970 in Vietnam and in the ICU after being shot in the right leg. Although the doctor was successful in saving his leg from amputation, young Carr was feeling rather hopeless. Ernie presented the idea to the young man that perhaps a higher power had been guiding the surgeon's hands, saving his leg and preparing him for a brighter future. At that moment, Jeff Carr turned his beliefs around. More than 40 years later, he tracked Ernie down to say thank you for giving him hope and a faith. Jeff is living in Washington State and has been reading about Ernie's career online.

**Where are you?** Research about alumni magazines proves that the first thing readers look at are the Class Notes. Send yours in today – email [advancement@bloomfield.edu](mailto:advancement@bloomfield.edu) or send to On the Green, Office of Institutional Advancement, 68 Oakland Avenue, Bloomfield, NJ 07003. If you send a hard copy of a photo, it will be returned to you. Or you can send photos electronically to the email listed. **Let us hear from you!**



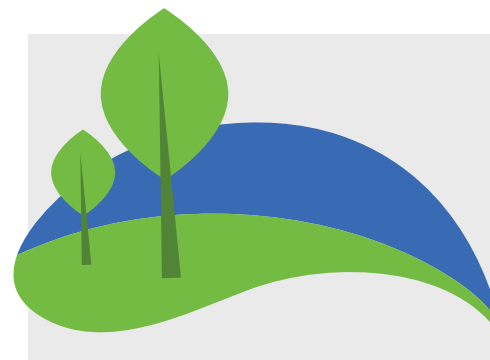
## Email updates

Did you know that once you graduate Bloomfield College your bloomfield.edu email address is no longer active? To receive notices about the On the Green, invitations, and college updates we need your current email address. Please send your address to [advancement@bloomfield.edu](mailto:advancement@bloomfield.edu). While you are doing this, how about attaching a class note about yourself, your news, accomplishments, job, moves, marriages, births, etc. Statistics show that most alumni will turn directly to class notes before reading the rest of the magazine. We have had instances of connecting long-lost friends through class notes. Send us your email address and updates today.



## Alumni website

You may have noticed that the old alumni website has a new look. We will no longer be at [bccommunity.org](http://bccommunity.org), but rather at [www.bloomfield.edu/alumni](http://www.bloomfield.edu/alumni). As the site evolves, there will be an opportunity to submit class notes to read on the site, peruse current and back issues of the *On the Green*, register for events, and get alumni news. We would love to hear your thoughts about the new look of our alumni site. Please let us know your suggestions by emailing us at [advancement@bloomfield.edu](mailto:advancement@bloomfield.edu).



## On the Green going green

Bloomfield College is making the effort to conserve energy through the resources available to us. Therefore, in the next year, *On the Green* will be going green and will be available online through [www.bloomfield.edu/alumni](http://www.bloomfield.edu/alumni). You will receive an email notification of the issue's availability and can read or download it at your convenience. You will also be able to send it on to your friends and family.

## BLOOMFIELD COLLEGE WESTMINSTER ARTS CENTER

### ROBERT V. VAN FOSSAN THEATRE 2013

[www.bccommunity.org/westminster](http://www.bccommunity.org/westminster)



**MOC Musical Theatre – In The Heights**  
Friday & Saturday, April 19, 20, 26 & 27 / 8pm  
Sunday, April 21 & 28 / 2pm

This Tony award-winning musical tells the universal story of a vibrant community in a NY neighborhood where the coffee from the corner bodega is light and sweet, the windows are always open and the breeze carries the rhythm of three generations of music. General Admission: \$25, Senior Citizens: \$22  
[www.mocmusicals.org](http://www.mocmusicals.org)

### Mel-O-Chords – Spring Concert

Saturday, May 11 / 8pm  
Sunday, May 12 / 3pm

This four-part vocal ensemble group returns to Westminster with a repertoire that ranges from musical theatre to popular music from multiple decades.

General Admission: \$20, Senior Citizens and Students: \$15  
For tickets or information, call 973.744.3133.  
[www.melochords.org](http://www.melochords.org)



**4th Wall Theatre – Lucky Stiff**  
Friday & Saturday, June 7, 8, 14, 15, 21 & 22 / 8pm; Sunday, June 16 / 3pm

From the creators of *Ragtime* this well-oiled musical farce concerns Harry, an mild-mannered English shoe salesman, who must take his recently murdered (and embalmed) uncle to Monte Carlo in order to inherit six million dollars. If he doesn't fulfill the task, all of the money will go to the Universal Dog Home in Brooklyn, and Harry hates dogs. Filled with zany characters and plenty of plot twists, this show is a delight from beginning to end. General Admission: \$22, Senior Citizens: \$20, Students: \$18.  
[www.4thwalltheatre.org](http://www.4thwalltheatre.org)

The Westminster Arts Center is a disabled access facility, located on the corner of Fremont and Franklin Streets on the campus of Bloomfield College, in Bloomfield, NJ.

**For reservations: 973-748-9000 ext. 1279**



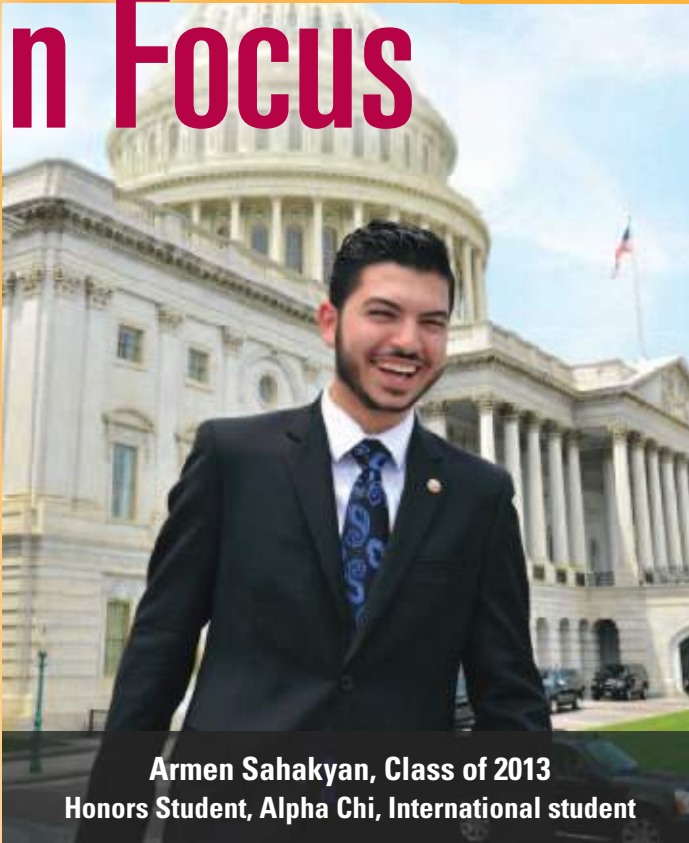


Bloomfield, New Jersey 07003

**BLOOMFIELD  
COLLEGE**

Non - Profit Org.  
U. S. Postage  
P A I D  
Permit No. 740  
Newark, NJ

# In Focus



**Armen Sahakyan, Class of 2013**  
Honors Student, Alpha Chi, International student

**Major:** Armen has a contract major in International Political Economy, Division of Social and Behavior Sciences under the supervision of Dr. Daniel Skinner. The major is developed by professors and is primarily a series of independent studies that meets the curricular guidelines for graduation.

**History:** Armen hails from Yerevan, Armenia. He was chosen to represent his country with 45 other international students to study political and international relations as part of the Benjamin Franklin Transatlantic Fellows Initiative at Wake Forest University. He was an exchange student at Mid-Prairie High School in Iowa where he earned the Presidential Volunteer Service Award for more than 130

hours of community service. Upon graduating high school in Armenia, he returned to Brookdale Community College, then Bloomfield College.

**Scholarships:** The recipient of several Armenian American scholarships, Armen also received the transfer student, president's, and dean's volunteer service scholarships.

**Honors Program:** As an honors student, he presented his paper at the Northeast Political Science Association Conference in Boston and will present at the Northeast Collegiate Honors Conference in Philadelphia in 2013. His papers center on domestic and international politics. "The Honors Program allows me to take my courses to the next level. The professors recognize my work and are happy to work with me in the future, which is important for my independent studies. The other honors students broaden my experience with different topics. Plus, we have our own lounge in the library!"

**Internships:** In 2012, he interned for the Armenian National Committee of America, advocating for issues such as awareness of the genocide, protection of Armenians in Syria, and the recognition of the Nagorno Karabakh Republic as an independent state. After his 2013 graduation, he will be interning in the Armenian mission to the United Nations.

**What he does in his spare time:** Armen is the executive vice president of the Global Education & Research Alliance in Washington DC. The NGO helps students with multicultural awareness, literacy, entrepreneurship, and the advancement of research and discovery of young talent.

**Graduate school:** Armen has applied to Johns Hopkins, Fletcher School of Law and Diplomacy (Tufts University), Georgetown, George Washington University, and Columbia. His first choice is Johns Hopkins.

**Career Goals:** "Ultimately, I want to become an Armenian diplomat. I know I want to be in Foreign Service, but I'll see where life takes me."

**Surprise ending:** Armen Sahakyan is 19 years old.